



USER GUIDE

TOUCHSCREEN INTERFACE

Model(s): V1200

Friday, March 13, 2026

Document number: 8923304 — Revision 5

Original Instructions



NRC-INDUSTRIES.COM

Serial number:



INTELLECTUAL PROPERTY NOTICE

Copyright © 2026 NRC Industries Inc. All rights reserved. This manual may not be copied, photocopied, reproduced, translated or converted to any electronic or machine-readable format in whole or in part without the prior written approval of NRC Industries Inc. NRC Industries Inc. reserves the right to modify the information provided herein at any time without notice.

Please send your comments and questions to:

NRC Industries Inc.
2430 Principale St.
Saint-Paul-d'Abbotsford, QC J0E 1A0
CANADA
Tel: (450) 379-5796
Fax: (450) 379-5995

REVISION HISTORY

| Revision | Date | Description |
|----------|------------|--|
| 5 | 2026-03-13 | <p>Added new section 5.5 "Taking a screenshot".</p> <p>Added new section 8.5 "Network settings".</p> <p>Removed chapter "Camera screen (optional)".</p> <p>Removed chapter "Parts".</p> <p>Revised images showing the footer to remove the Camera icon.</p> <p>Edited section 2.1.</p> <p>Edited some figure descriptions in chapter 4.</p> <p>Edited introduction and some figure descriptions in chapter 5.</p> <p>Added note to section 5.1.</p> <p>Edited Table 4.</p> <p>Corrected typo in Table 6.</p> |
| 4.2 | 2025-03-05 | Figure 3 updated with notification component identification. In section 4.5, third bullet rephrased. |
| 4.1 | 2025-02-26 | <p>Updated two figure labels.</p> <p>Updated the truck setting detail image.</p> <p>New PTO out and PTO in icons.</p> <p>New definitions for Angle over cab, Rotation over cab and CLA (Distance between the cab and the last axle).</p> |
| 4 | 2025-02-21 | Updated images and icons throughout the manual to reflect interface updates. |
| 3 | 2024-11-14 | <p>Revamped chapter 4 "Operation screen."</p> <p>Added chapter 5 "Job Planner screen."</p> <p>Added chapter 6 "Hydraulic screen."</p> <p>Removed chapter "Tow screen."</p> <p>Added new section 8.6 "App settings."</p> <p>Updated images and icons throughout the manual to reflect chapter and section changes.</p> <p>Updated the wording throughout the manual to reflect chapter and section changes.</p> |

| Revision | Date | Description |
|----------|------------|---|
| 2 | 2024-04-26 | <p>Replaced figures showing screens to include the Parts menu. Changed "Models" to "Model(s)" in the page footer. Corrected typos. Edited 1.1 to reflect the interface change from "4 digits password" to "PIN (4 digits)". Changed "Admin" to "Admin management" in 7.1, including subsections. Edited title and contents of 7.1.1 to match image. Edited procedure in 7.2. Added 7.4.3. Renamed Chapter 3 from "General screen" to "Home screen". Edited sentence in Chapter 9 to turn it into a Note. Added Chapter 10. Edited introduction and navigation options in Chapter 11. Added title to Table 1. Changed "Mass" to "Estimated mass" in the first row and edited definition of green area in the third row of Table 5. Added table headings to Table 6. Edited explanation of axle load and capacity diagram in Table 7. Added "Truck settings" row to Table 13.</p> |
| 1 | 2023-12-18 | <p>Added Chapter 2. Edited wording of a bullet point in 2.1. Added line to Chapter 1 about creating a new profile if needed. Added note about the Admin profile. Clarified description of the 4 digits password. Renamed 1.1. Removed duplicate content from Chapter 3 that is now in Chapter 2. Removed note about admin management functions. Renamed Chapter 3. Added description of the Warning bar to Chapter 5.</p> |
| 0 | 2023-11-13 | Initial release |

CONTENTS

| | |
|--|-----------|
| LIMITED WARRANTY | 9 |
| ABOUT THIS MANUAL | 11 |
| 1 LOGIN SCREEN | 13 |
| 1.1 New profile | 14 |
| 2 SCREEN LAYOUT | 15 |
| 2.1 Notifications | 17 |
| 3 HOME SCREEN | 19 |
| 4 OPERATION SCREEN | 21 |
| 4.1 Top-down view and side view | 23 |
| 4.2 Measurements and controls | 26 |
| 4.3 Inputting outrigger lengths | 31 |
| 4.4 Viewing lifting capacity in box mode | 32 |
| 4.5 Viewing the lifting mode | 34 |
| 4.6 Viewing hydraulics | 36 |
| 4.7 Operation screen use case | 36 |
| 5 JOB PLANNER SCREEN | 37 |
| 5.1 Previewing lifting capacities | 39 |
| 5.2 Previewing lifting mode | 40 |
| 5.3 Saving and viewing setups | 41 |
| 5.4 Exporting from Operation | 42 |
| 5.5 Taking a screenshot | 43 |
| 6 HYDRAULIC SCREEN | 44 |
| 7 TRUCK SCREEN | 47 |
| 8 SETTINGS SCREEN | 51 |
| 8.1 General settings | 51 |
| 8.2 Profile settings | 61 |
| 8.3 Brightness settings | 63 |
| 8.4 Tow truck information | 64 |
| 8.5 Network settings | 69 |
| 8.6 Notifications and sound settings | 71 |
| 8.7 App Settings | 72 |
| 9 MAINTENANCE SCREEN | 75 |
| 9.1 To Do list | 76 |

| | |
|-------------------------|----|
| 9.2 Upcoming list | 79 |
| 9.3 Done list | 80 |
| 9.4 General list | 81 |
| 10 MANUALS SCREEN | 83 |

LIMITED WARRANTY

A. GENERAL PROVISIONS - THE WARRANTY DESCRIBED BELOW IS PROVIDED BY INDUSTRIES NRC INC, 2430 PRINCIPALE EST C.P. 160, ST-PAUL D'ABBOTSFORD, QUÉBEC, CANADA, J0E 1A0 ("INDUSTRIES NRC") TO THE ORIGINAL PURCHASER OF NEW TOWING AND RECOVERY EQUIPMENT ("EQUIPMENT") PURCHASED FROM INDUSTRIES NRC OR AUTHORIZED INDUSTRIES NRC DEALERS. UNDER THIS WARRANTY, INDUSTRIES NRC WILL REPAIR OR REPLACE, AT ITS OPTION, ANY PART COVERED UNDER THIS WARRANTY WHICH IS FOUND TO BE DEFECTIVE IN MATERIAL OR WORKMANSHIP DURING THE APPLICABLE WARRANTY TERM. WARRANTY SERVICE MUST BE PERFORMED BY A DEALER OR SALES SERVICE CENTRE AUTHORIZED BY INDUSTRIES NRC TO SELL AND/OR SERVICE THE EQUIPMENT (THE "AUTHORIZED DEALER"). THE AUTHORIZED DEALER WILL USE ONLY NEW OR REMANUFACTURED PARTS OR COMPONENTS FURNISHED OR APPROVED BY INDUSTRIES NRC. WARRANTY SERVICE WILL BE PERFORMED WITHOUT CHARGE TO THE PURCHASER FOR PARTS. HOWEVER, THIS WARRANTY DOES NOT OBLIGATE INDUSTRIES NRC TO BEAR THE COST OF LABOR OR TRANSPORTATION CHARGES IN CONNECTION WITH THE REPAIR OR REPLACEMENT OF ANY PARTS FOUND TO BE DEFECTIVE, NOR SHALL IT APPLY TO A PRODUCT UPON WHICH REPAIRS OR ALTERATIONS HAVE BEEN MADE UNLESS AUTHORIZED BY INDUSTRIES NRC. THE PURCHASER WILL BE RESPONSIBLE FOR SERVICE CALLS AND/OR TRANSPORTATION OF EQUIPMENT TO AND FROM THE AUTHORIZED DEALER'S PLACE OF BUSINESS (EXCEPT WHERE PROHIBITED BY LAW), FOR ANY PREMIUM CHARGED FOR OVERTIME LABOUR REQUESTED BY THE PURCHASER AND FOR ANY SERVICE AND/OR MAINTENANCE NOT DIRECTLY RELATED TO ANY DEFECT COVERED UNDER THIS WARRANTY. THIS WARRANTY IS TRANSFERABLE, PROVIDED AN AUTHORIZED INDUSTRIES NRC DEALER IS NOTIFIED OF THE OWNERSHIP CHANGE, AND INDUSTRIES NRC APPROVES THE TRANSFER.

B. WHAT IS WARRANTED - SUBJECT TO PARAGRAPH C, ALL PARTS, MANUFACTURED BY INDUSTRIES NRC, OF ANY NEW INDUSTRIES NRC EQUIPMENT, ARE WARRANTED FOR THE NUMBER OF MONTHS SPECIFIED BELOW. WARRANTY STATEMENTS COVERING COMPONENTS NOT MANUFACTURED BY NRC ARE FOUND WITH THE OPERATOR'S MANUALS DELIVERED WITH THE EQUIPMENT.

C. WHAT IS NOT WARRANTED - PURSUANT TO THE TERMS OF THIS WARRANTY, INDUSTRIES NRC IS NOT RESPONSIBLE FOR THE FOLLOWING: (1) USED EQUIPMENT (UNLESS IT IS SPECIFICALLY COVERED BY SEPARATE WARRANTY DOCUMENTS); (2) ANY EQUIPMENT THAT HAS BEEN ALTERED OR MODIFIED IN WAYS NOT APPROVED BY INDUSTRIES NRC, INCLUDING, BUT NOT LIMITED TO, HYDRAULIC PRESSURE SETTINGS ABOVE INDUSTRIES NRC SPECIFICATIONS; (3) DEPRECIATION OR DAMAGE CAUSED BY NORMAL WEAR, LACK OF REASONABLE AND PROPER MAINTENANCE, FAILURE TO FOLLOW OPERATING INSTRUCTIONS, MISUSE, LACK OF PROPER PROTECTION DURING STORAGE, VANDALISM, THE ELEMENTS OR COLLISION OR ACCIDENT; (4) THE EQUIPMENT IF USED FOR OVERHEAD LIFTING, CRANE WORK OR ANY OTHER UNAPPROVED ACTIVITY; (5) NORMAL MAINTENANCE PARTS AND/OR SERVICE.

D. SECURING WARRANTY SERVICE - TO SECURE WARRANTY SERVICE THE PURCHASER MUST, (1) REPORT THE EQUIPMENT DEFECT TO AN AUTHORIZED DEALER AND REQUEST WARRANTY SERVICE WITHIN THE APPLICABLE WARRANTY TERM; (2) PRESENT EVIDENCE OF THE WARRANTY START DATE TOGETHER WITH THE VALID PROOF OF PURCHASE; AND, (3) MAKE THE EQUIPMENT AVAILABLE TO AN AUTHORIZED DEALER OR SERVICE CENTRE WITHIN A REASONABLE PERIOD OF TIME.

E. NO IMPLIED WARRANTY, REPRESENTATION OR CONDITION - TO THE EXTENT PERMITTED BY LAW, NEITHER INDUSTRIES NRC NOR ANY COMPANY AFFILIATED WITH IT MAKES ANY WARRANTY, REPRESENTATION, CONDITION OR PROMISE, EXPRESS OR IMPLIED, VERBAL OR OTHERWISE, AS TO THE QUALITY, PERFORMANCE OR FREEDOM FROM DEFECT OF THE EQUIPMENT. NO IMPLIED OR STATUTORY CONDITIONS OR WARRANTIES OF MERCHANTABILITY OR FITNESS (WHETHER PURSUANT TO THE SALE OF GOODS ACT OR ANY OTHER STATUTE OF ANY PROVINCE/STATE OR OTHERWISE) ARE MADE.

F. EXCLUSIVE REMEDY - TO THE EXTENT PERMITTED BY LAW, THE PURCHASER'S EXCLUSIVE REMEDY IN CONNECTION WITH THE BREACH OR PERFORMANCE OF ANY WARRANTY ON THE EQUIPMENT ARE THOSE SET FORTH IN THIS WARRANTY. IN NO EVENT WILL AN AUTHORIZED DEALER, INDUSTRIES NRC OR ANY COMPANY AFFILIATED WITH INDUSTRIES NRC, BE LIABLE FOR ANY INCIDENTAL OR CONSEQUENTIAL DAMAGES OR INJURIES, INCLUDING BUT NOT LIMITED TO, LOSS OF PROFITS, RENTAL OF SUBSTITUTE EQUIPMENT, OTHER COMMERCIAL OR PERSONAL LOSS OR DAMAGES ARISING AS A RESULT OF A FUNDAMENTAL BREACH OR BREACH OF A FUNDAMENTAL TERM.

G. NO DEALER WARRANTY - EXCEPT FOR CONDITIONS OR WARRANTIES WHICH MAY NOT BE EXCLUDED BY LAW, THE SELLING DEALER MAKES NO WARRANTY OF ITS OWN ON ANY ITEM WARRANTED BY INDUSTRIES NRC, AND MAKES NO WARRANTY ON OTHER ITEMS UNLESS IT DELIVERS TO THE PURCHASER A SEPARATE WRITTEN WARRANTY DOCUMENT SPECIFICALLY WARRANTING THE ITEM. THE SELLING DEALER HAS NO AUTHORITY TO MAKE ANY REPRESENTATION OR PROMISE ON BEHALF OF INDUSTRIES NRC OR TO MODIFY THE TERMS OR LIMITATIONS OF THIS WARRANTY IN ANY WAY.

H. WARRANTY TERMS

EQUIPMENT

TERMS

TRUCK MOUNTED RECOVERY EQUIPMENT

12 MONTHS FROM "IN SERVICE" DATE. NO MORE THAN 24 MONTHS.

SLIDING SYSTEM COMPONENTS

10 YEARS FROM DATE OF MANUFACTURING.

TOWING ACCESSORIES MANUFACTURED BY INDUSTRIES NRC

12 MONTHS FROM DATE OF MANUFACTURING.

ACCESSORIES MANUFACTURED BY A THIRD PARTY

THIRD PARTY WARRANTY APPLIES.

ABOUT THIS MANUAL

This manual will teach you how to use the touchscreen interface.

It contains the following sections, which you should read and follow in the order they are presented:

- Chapter 1 Login screen
- Chapter 2 Screen layout
- Chapter 3 Home screen
- Chapter 4 Operation screen
- Chapter 5 Job Planner screen
- Chapter 6 Hydraulic screen
- Chapter 7 Truck screen
- Chapter 8 Settings screen
- Chapter 9 Maintenance screen
- Chapter 10 Manuals screen

Document conventions

The following conventions are used throughout this document:

NOTE: We highly recommend that you read this manual in full before using your NRC equipment.

Disclaimer

This manual, including the equipment specifications, is subject to change without notice. Ensure that you have the latest version of this manual before using your equipment.

Applicable models and serial numbers

This manual is intended for use with the following models with serial numbers within the following ranges only:

- CSR85-022 and CSR85-024+

1 LOGIN SCREEN

To access the V1200 touchscreen interface, log in or create a profile (see Section 1.1).

To log in, select your profile from the list of users. If requested, enter your PIN.


NOTE: The Admin profile is available by default. It allows you to access some additional settings (see Section 8.1.6).

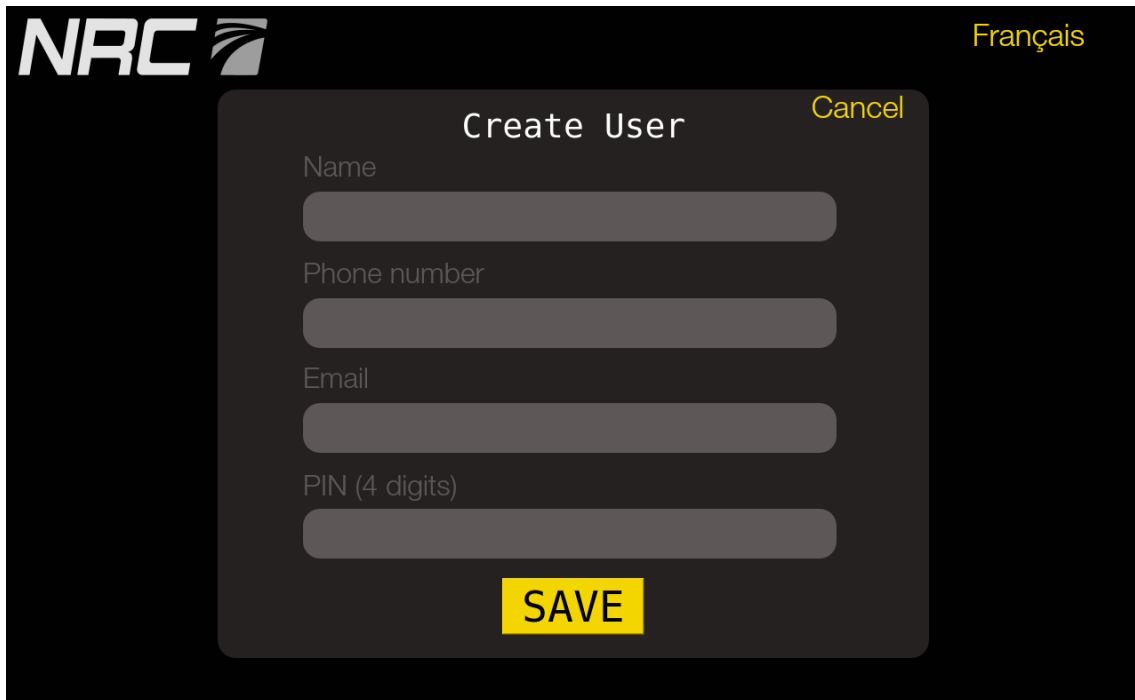


FIGURE 1 – LOGIN SCREEN

1.1 New profile

To create a new profile:

1. Tap  in the upper right corner.
2. Complete the fields as follows:
 - a. **Name:** Enter your name.
 - b. **Phone number:** Enter your phone number.
 - c. **Email:** Enter your email address.
 - d. **PIN (4 digits):** Enter a four-digit passcode.



3. Tap **Save**.

2 SCREEN LAYOUT

NOTE: Depending on your model, the touchscreen may or may not display a Camera button in the footer.

After you log in, all pages of the touchscreen interface have a similar layout showing the following:

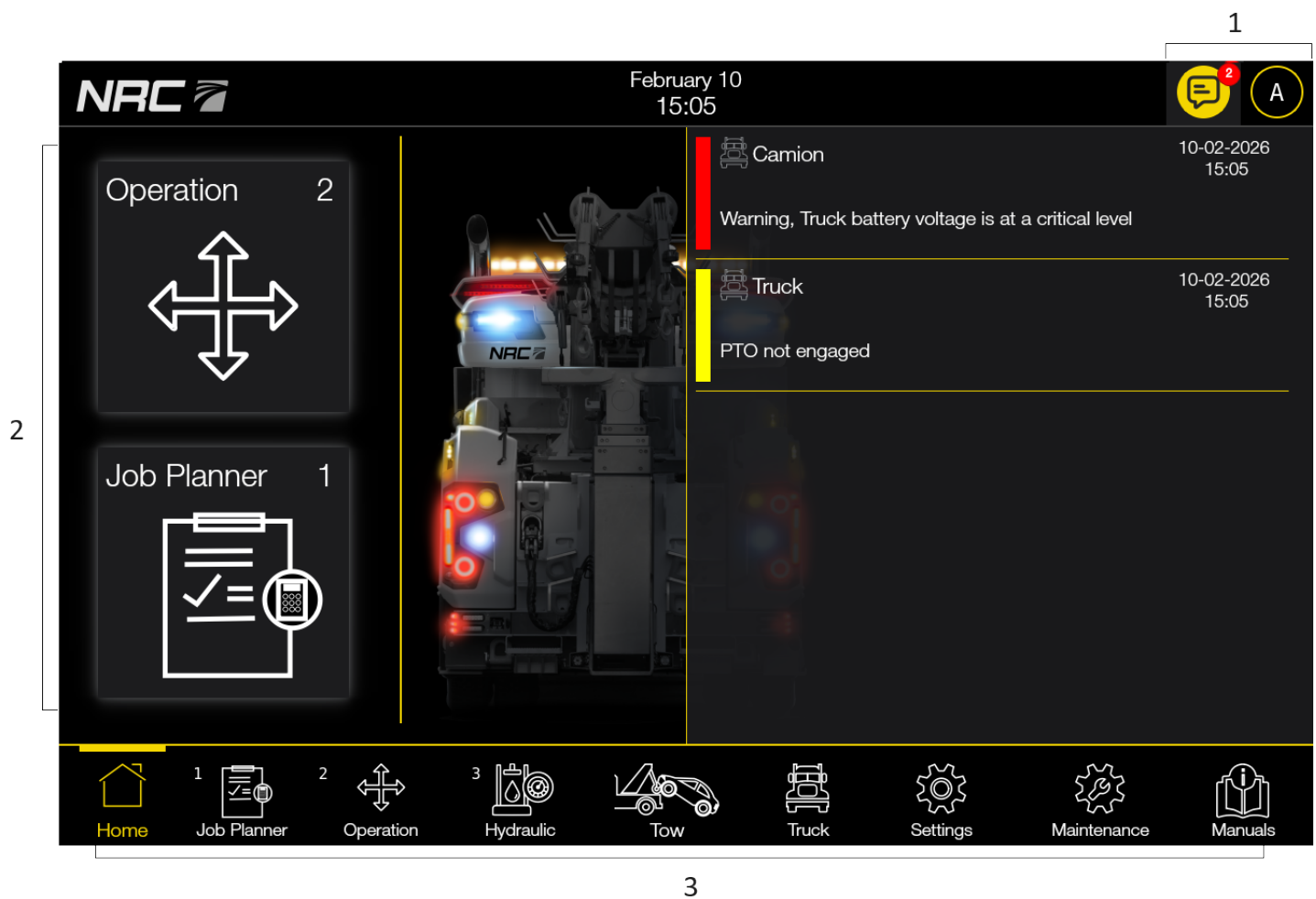
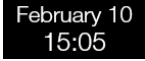
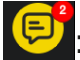





FIGURE 2 – SCREEN LAYOUT

TABLE 1 – SCREEN COMPONENT DESCRIPTIONS

| Component | Description |
|-----------|--|
| 1 | <p>The header displays the following:</p> <ul style="list-style-type: none"> <li data-bbox="362 489 1052 548">  : Date and time. See Section 8.1.2. <li data-bbox="362 558 1118 617">  : Tap to show notifications. See Section 2.1. <li data-bbox="362 627 1068 686">  : Tap to choose View profile or Log out. |
| 2 | <p>The body displays different information and options depending on which screen you're on.</p> |
| 3 | <p>The footer displays the following buttons:</p> <ul style="list-style-type: none"> <li data-bbox="362 873 769 905">Home: The home screen. <li data-bbox="362 926 807 957">Job Planner: See Section 5. <li data-bbox="362 978 777 1010">Operation: See Section 4. <li data-bbox="362 1031 769 1062">Hydraulic: See Section 6. <li data-bbox="362 1083 712 1115">Truck: See Section 7. <li data-bbox="362 1136 751 1167">Settings: See Section 8. <li data-bbox="362 1188 821 1220">Maintenance: See Section 9. <li data-bbox="362 1241 774 1272">Manuals: See Section 10. <p>Screens with notifications will show a red circle . The screen you are currently on is highlighted in yellow.</p> |

2.1 Notifications

To view notifications, tap  in the upper right corner. Examples of actions that trigger notifications include:

- Lifting an object that is heavier than the current limit.
- Rotating the boom out of the safe zone

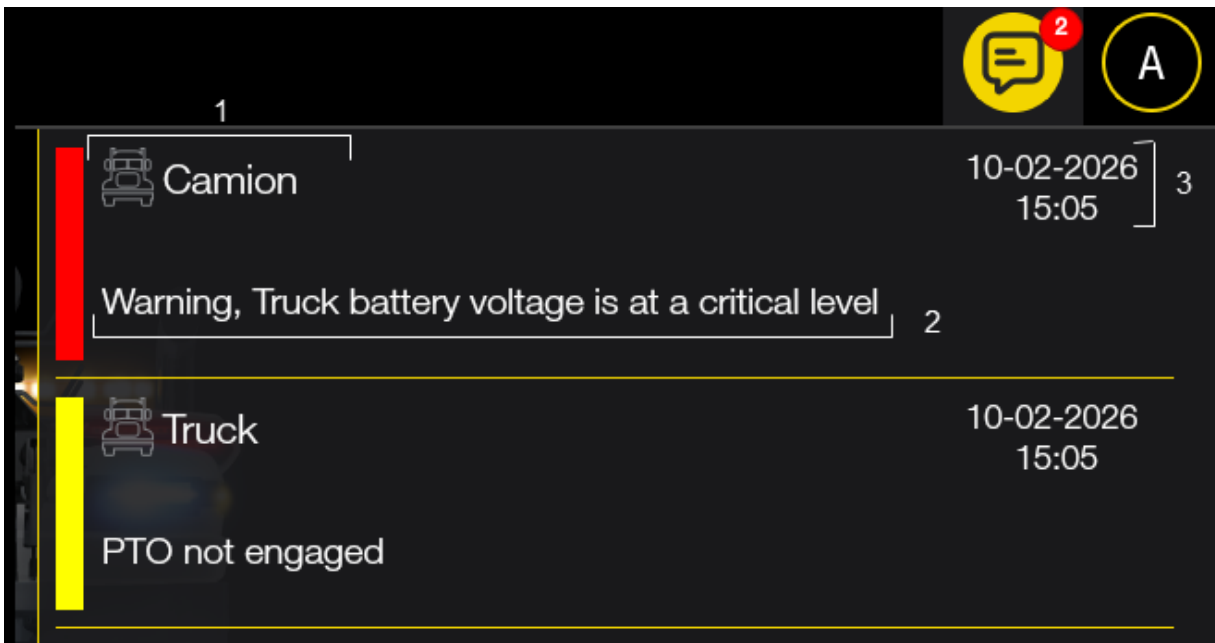


FIGURE 3 – NOTIFICATIONS

Yellow notifications are caution messages, while red notifications are critical messages.

In the Notifications window, you can do the following:

- Tap a notification to go to the relevant screen.
- Swipe left on a notification to delete it.

Notifications will disappear on their own once the issue has been resolved. To mute notifications, see Section 2.

TABLE 2 – NOTIFICATION COMPONENT DESCRIPTIONS

| Component | Description |
|-----------|--------------------------------------|
| 1 | The screen the notification is from. |
| 2 | The notification details. |
| 3 | Date and time of the notification. |

3 HOME SCREEN

The Home screen of the touchscreen interface (Figure 4) displays shortcuts to the following:

- **Operation:** See Section 4.
- **Job Planner:** See Section 5.

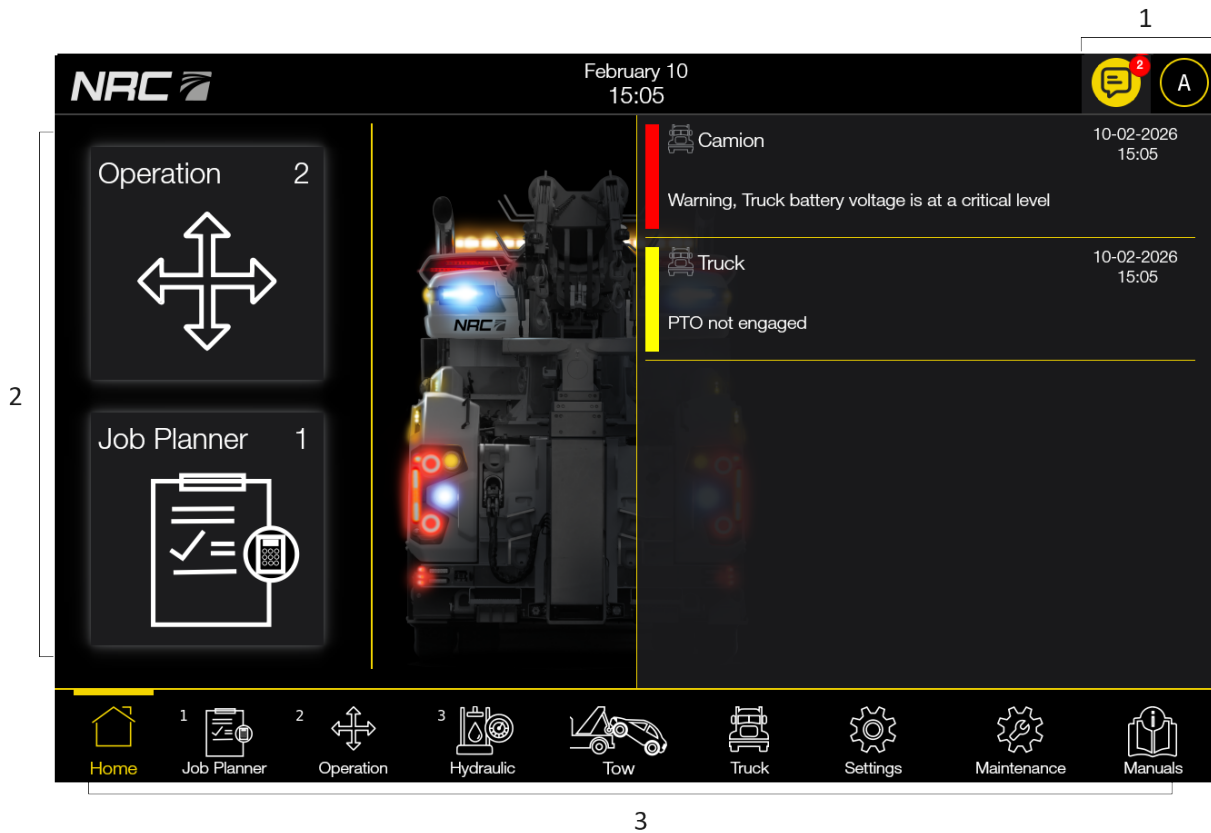


FIGURE 4 – HOME SCREEN OF THE V1200

4 OPERATION SCREEN

The Operation screen allows you to view real-time information on the wrecker's lifting capacities, the boom, the outriggers, hydraulics, and related settings.

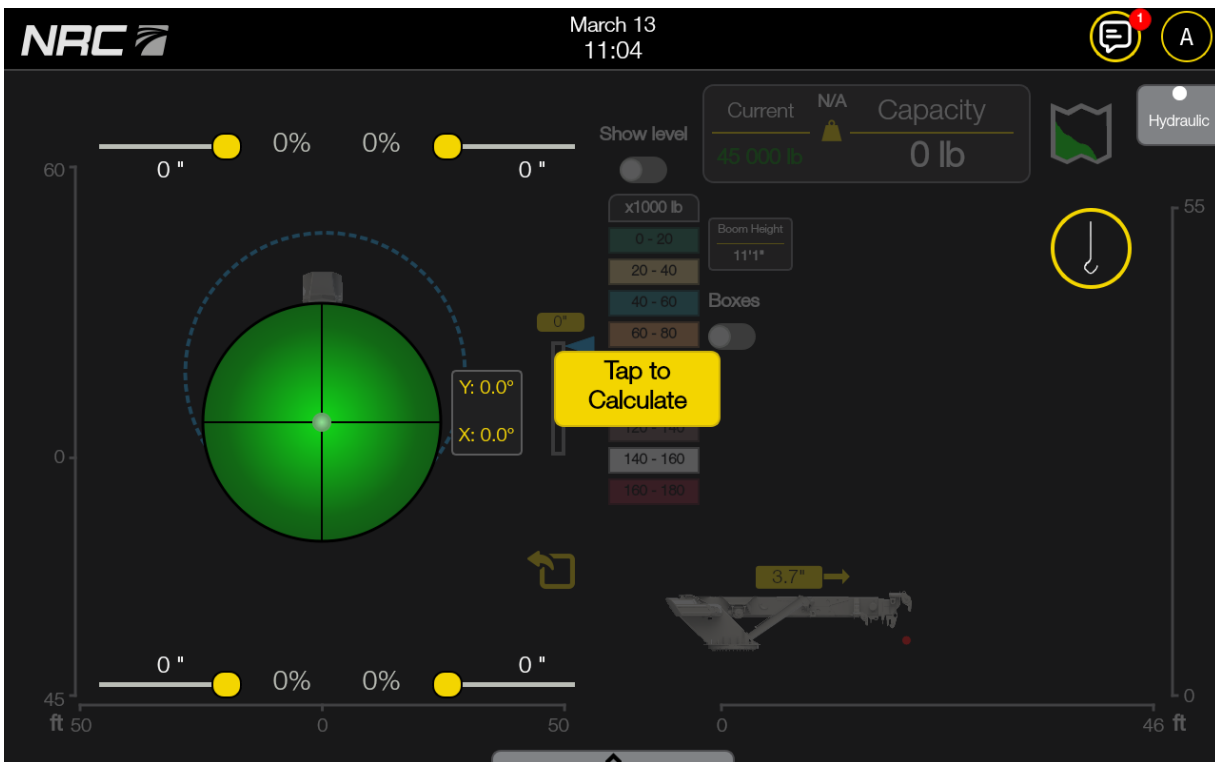


FIGURE 5 – OPERATION SCREEN

The Operation screen's primary function is to show if the current load is within max capacity and can be safely lifted. The maximum lifting capacity is calculated in real time using the following measurements:

- Wrecker weight
- Outrigger extension
- Sliding base position
- Boom rotation
- Boom length
- Boom angle

The **Current vs. Max Capacity** dashboard displays the current load and the real-time max capacity.

In Figure 6, the **Current vs. Max Capacity** dashboard shows that the current load being lifted is 50,000 lbs, while the maximum lifting capacity, based on the wrecker's weight and the current outrigger, sliding base, and boom configuration, is 42,600 lbs.

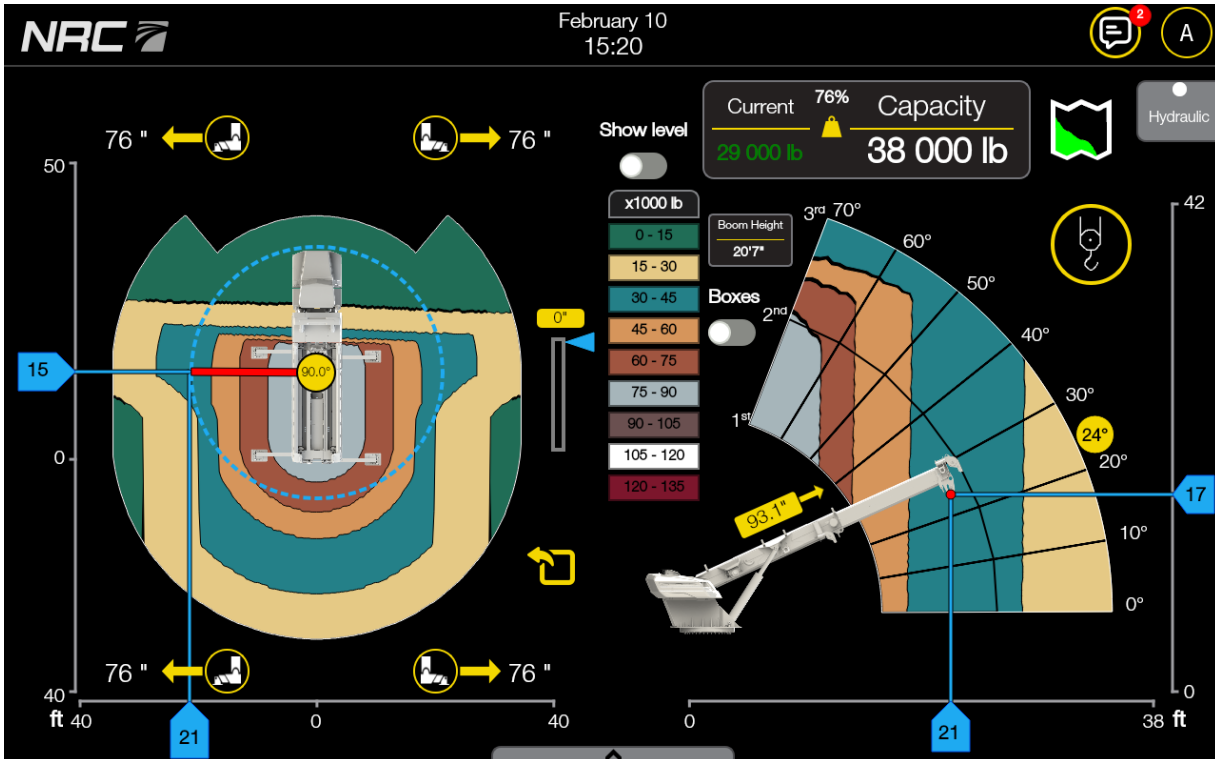


FIGURE 6 – OPERATION SCREEN – VIEWING REAL-TIME LIFTING CAPACITY

4.1 Top-down view and side view

The Operation screen consists of two views: the top-down view and the side view.

The top-down view shows estimates of lifting capacities in a 360°, bird's-eye view, based on the following factors:

- Wrecker weight
- Outrigger extension

Figure 7 shows that the boom tip, marked by the end of the red line, is located in the teal zone at 35°. Therefore, the maximum lifting capacity ranges from 18,000 kg to 27,000 kg.

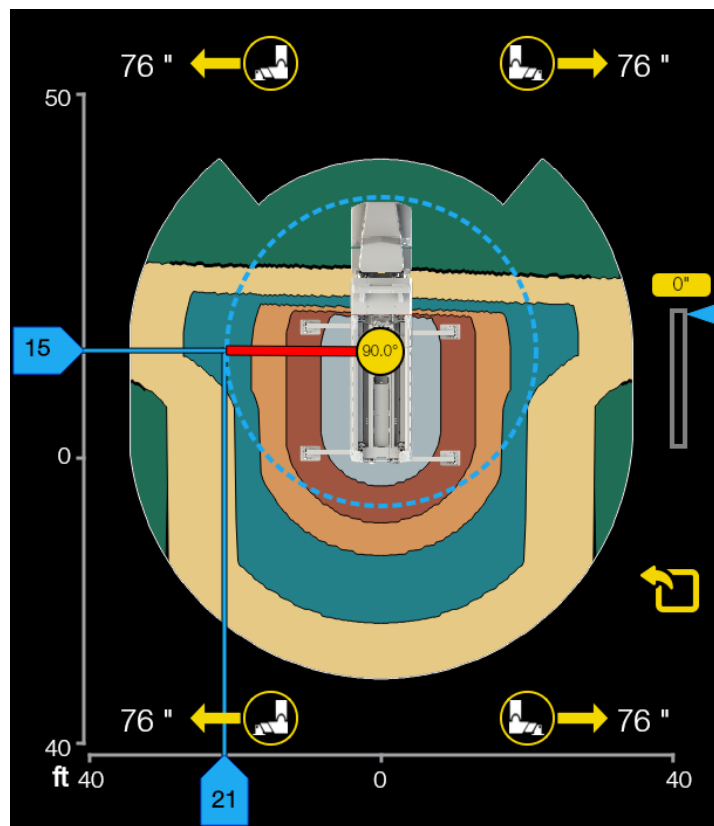


FIGURE 7 – OPERATION SCREEN – TOP-DOWN VIEW

NOTE: The lifting capacities shown in the top-down view may not always align with the values shown in the side view. The top-down view gives conservative estimates, whereas the side view aims to give precise measurements.

The side view shows estimates of lifting capacities by offering a cross-sectional perspective of the top-down view.

The side view provides more precise estimates compared to the top-down view by taking into account the following additional factors:

- Sliding base position
- Boom length
- Boom angle
- Boom rotation

Figure 8 shows that the boom tip is in the teal zone with a length of 93.1" and is at an angle of 24°. Therefore, the maximum lifting capacity is between 30,000 kg to 45,000 kg.

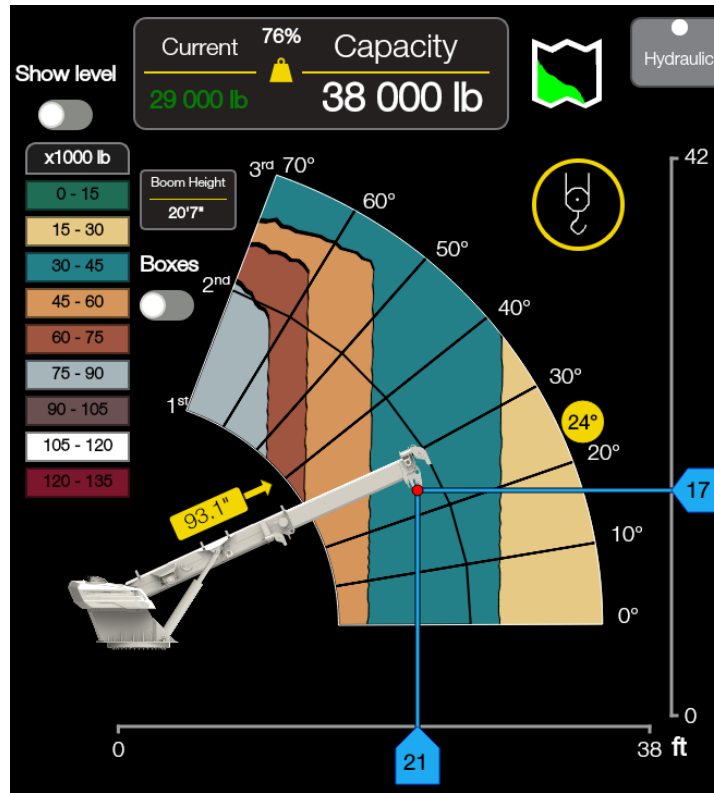


FIGURE 8 – OPERATION SCREEN – SIDE VIEW

TABLE 3 – OPERATION MEASUREMENTS

| Measurements | Description |
|--------------|---|
| 1 | Displays the following: <ul style="list-style-type: none"> • The estimated load the boom is currently lifting. • The boom's maximum lifting capacity based on the wrecker's weight and current outrigger and boom configuration. |
| 2 | This colour-coded legend displays the lifting capacities for each zone. |
| 3 | The four outrigger icons display the extended length of each outrigger. Tap each outrigger icon to input its length. See Section 4.3. NOTE: The extended lengths of the outriggers are automatically detected if the wrecker is equipped with the outrigger sensors. |
| 4 | Displays the extended length of the boom from its pivot point. |
| 5 | Displays the boom angle relative to the base of the wrecker, measured in degrees. NOTE: Operating on uneven terrain may affect the accuracy of the measurement. |
| 6 | Displays a top-down view of the following: <ul style="list-style-type: none"> • The boom's length, represented by the red line. • The boom's angle relative to the rear of the wrecker. |
| 7 | The blue circle displays the circumference that the boom can potentially reach based on its current extended length. |
| 8 | Displays the height of the boom relative to the ground, based on the current boom configuration. |

| Measurements | Description |
|---------------|--|
| 9, 10, 11, 12 | <ul style="list-style-type: none"> • 9: Displays the distance from the boom tip to the rear of the wrecker along the Y-axis, measured in feet or meters. • 10: Displays the distance from the boom tip to the centre of the wrecker along the X-axis, measured in feet or meters. • 11: Displays the distance from the boom tip to the centre of the boom rotation along the X-axis, measured in feet or meters. • 12: Displays the distance from the boom tip to the ground along the Y-axis, measured in feet or meters. |
| 13 | Displays the position of the sliding base, measured from its front position. The blue arrow indicates the sliding base's current position. |

4.2.2 Controls

Figure 10 displays the controls on the Operation screen.

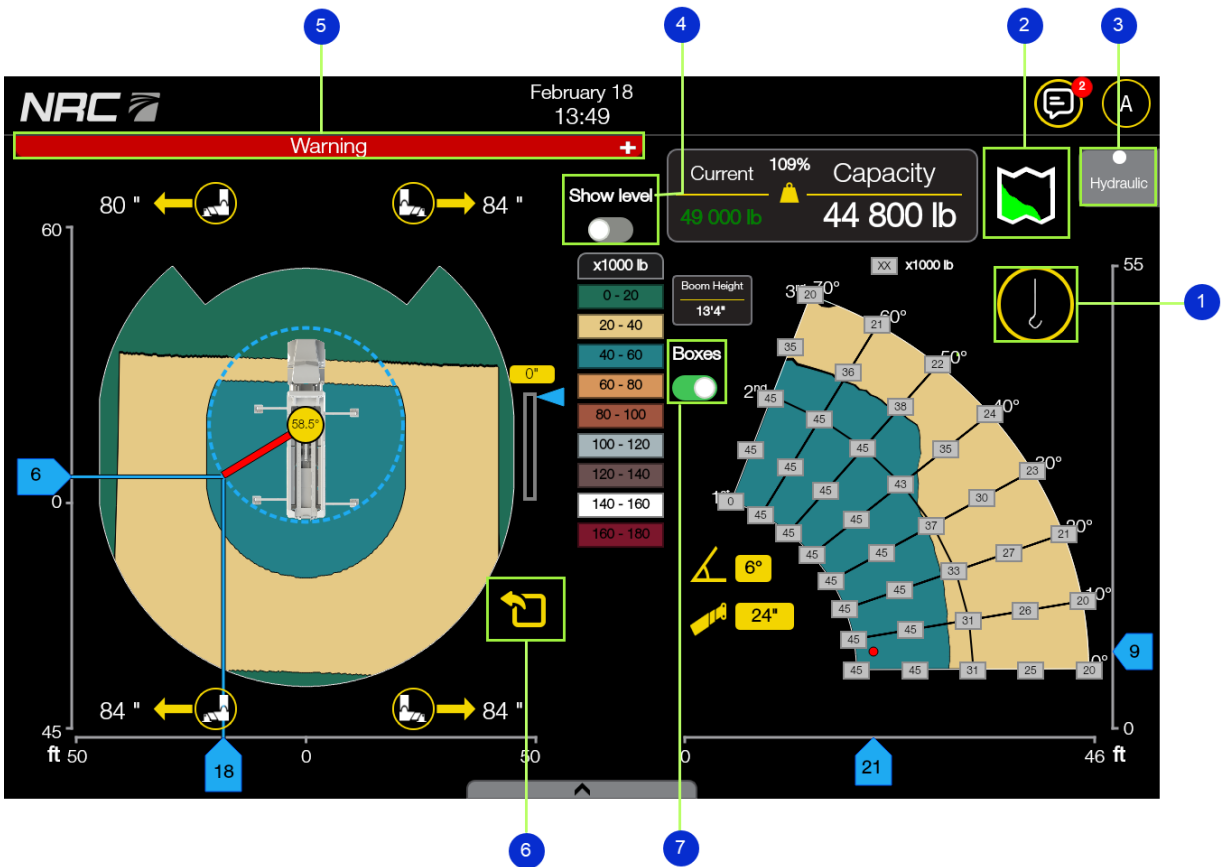


FIGURE 10 – OPERATION SCREEN – CONTROLS

TABLE 4 – OPERATION CONTROLS

| Controls | Description |
|----------|--|
| 1 | View the number of tackles. |
| 2 | Tap to switch to lifting mode. See Section 4.5. |
| 3 | Tap to access the Hydraulic screen, which displays real-time metrics related to the wrecker, boom, and outriggers. See Chapter 6. |

| Controls | Description |
|----------|---|
| 4 | Toggle to view the carrier's leveling status, measured in both horizontal and vertical orientations (i.e., X: 0.0. and Y: 0.0). |
| 5 | Tap to display a list of warnings regarding your current operation. |
| 6 | Tap to export your current outrigger, sliding base, and boom configuration to the Job Planner. |
| 7 | Toggle to switch to box mode, which displays multiple maximum lifting capacities based on various possible boom configurations and the current outrigger and sliding base configuration. See Section 4.4. |

4.3 Inputting outrigger lengths

Real-time lifting capacity calculations account for the extension of the outriggers. You can only input the outrigger lengths if your wrecker is not equipped with outrigger sensors. Otherwise, outrigger lengths are automatically detected and manual entry is not required.

To input the length of an outrigger:

1. Tap one of the four **Outrigger** icons.
2. Drag the corresponding yellow node along the slider to set the length of the outrigger.
3. Tap the **Tap to Calculate** button to confirm your input and view the updated lifting capacities in the top-down view.

NOTE: You can also tap the outrigger measurement to enter the length directly. This will open a keypad allowing you to input the value.

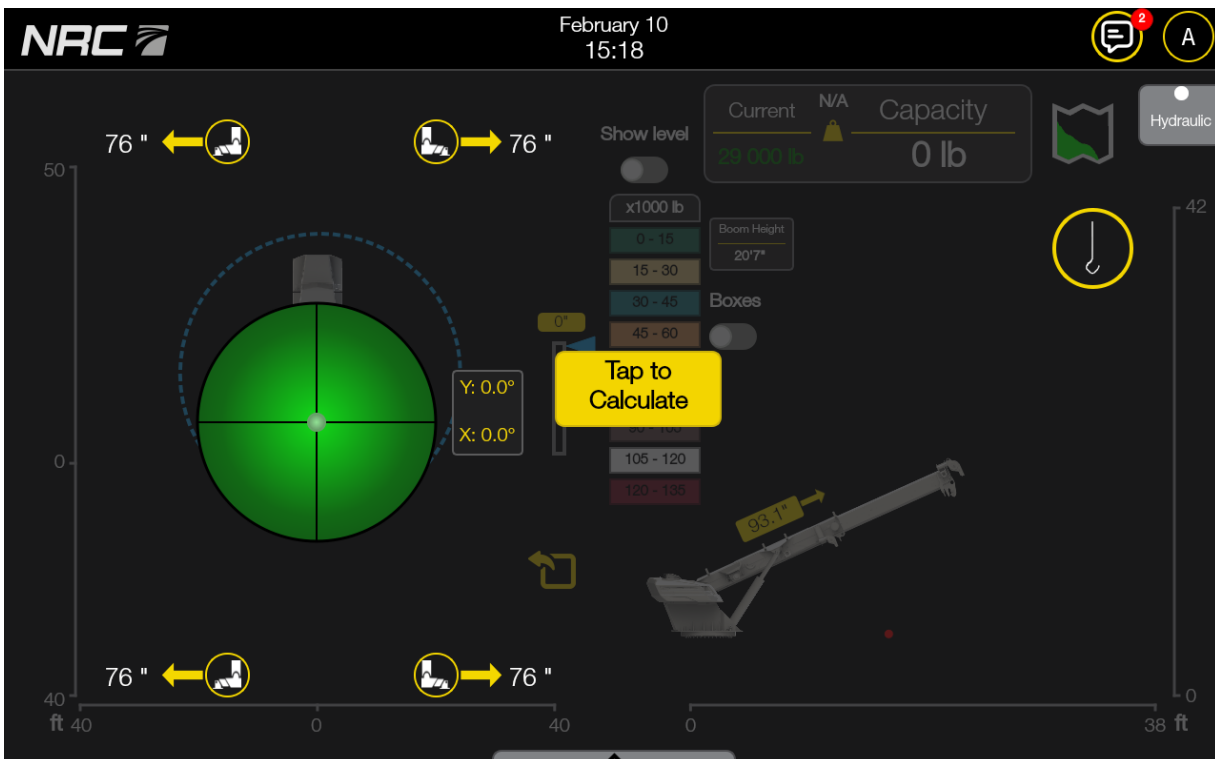



FIGURE 11 – OPERATION SCREEN – SETTING OUTRIGGER LENGTHS

4.4 Viewing lifting capacity in box mode

The side view offers several lifting capacity reference points. You can access these by toggling the  icon in the side view.

This view is useful for quickly estimating the lifting capacity at different boom configurations.

In Figure 12, the numbers inside the boxes represent the maximum lifting capacities based on the various boom configurations. For example, if you were to extend the boom to its maximum length and elevate it all the way to 70°, the resulting maximum lifting capacity would be approximately 32,000 lbs. The red dot represents a visual indication of the boom's current position.

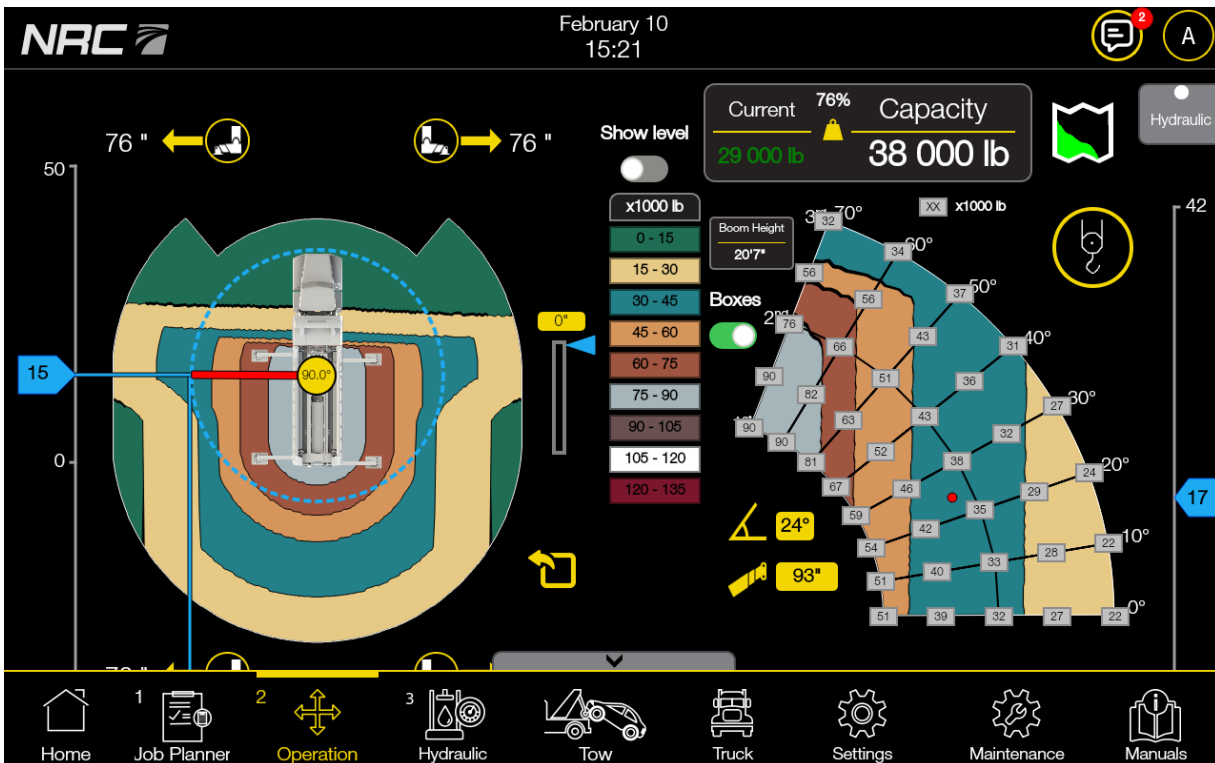


FIGURE 12 – OPERATION SCREEN – LIFTING CAPACITY IN BOX MODE

Tap any section in the side view for a more precise estimate of the lifting capacity if the boom is moved to that section. For example, in Figure 13, tapping in the teal zone at around 47° yields an estimated lifting capacity of 48,100 lbs.

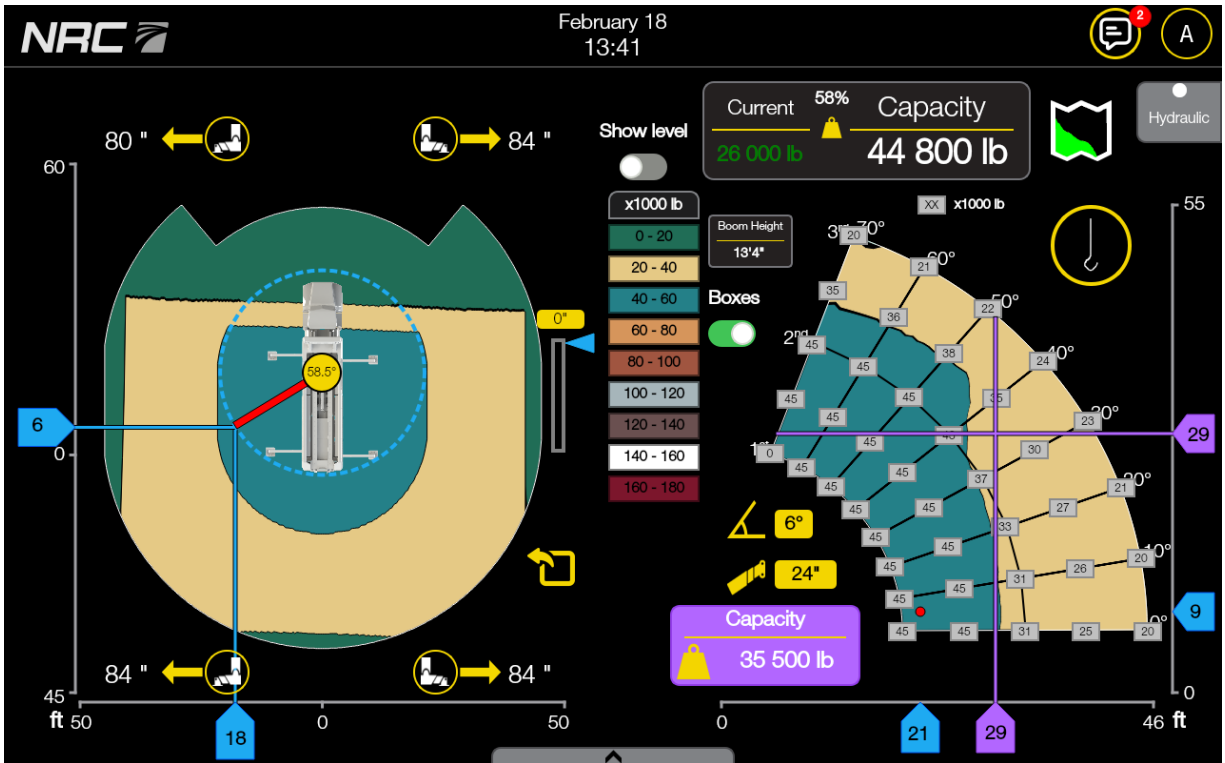




FIGURE 13 – OPERATION SCREEN – CAPACITY

4.5 Viewing the lifting mode

Tap the  icon in the top-right corner of the Operation screen to view the boom's range of motion with the detected load, according to the current outrigger, sliding base, and boom configuration. Tap the  icon to return to the main Operation screen (chart mode).

In Figure 14, the green areas in both views show the potential reach of the boom with a current load of 29,000 lbs. In particular:

- The top-down view shows that the boom cannot rotate to the front of the wrecker, but it can rotate freely in the green area.
- The yellow areas in the top-down view indicates conditional range of motion; positions in the yellow areas are only accessible with specific boom configurations.
- The side view shows that the boom cannot fully extend between 0 and 34°, but it can operate freely in the green area.

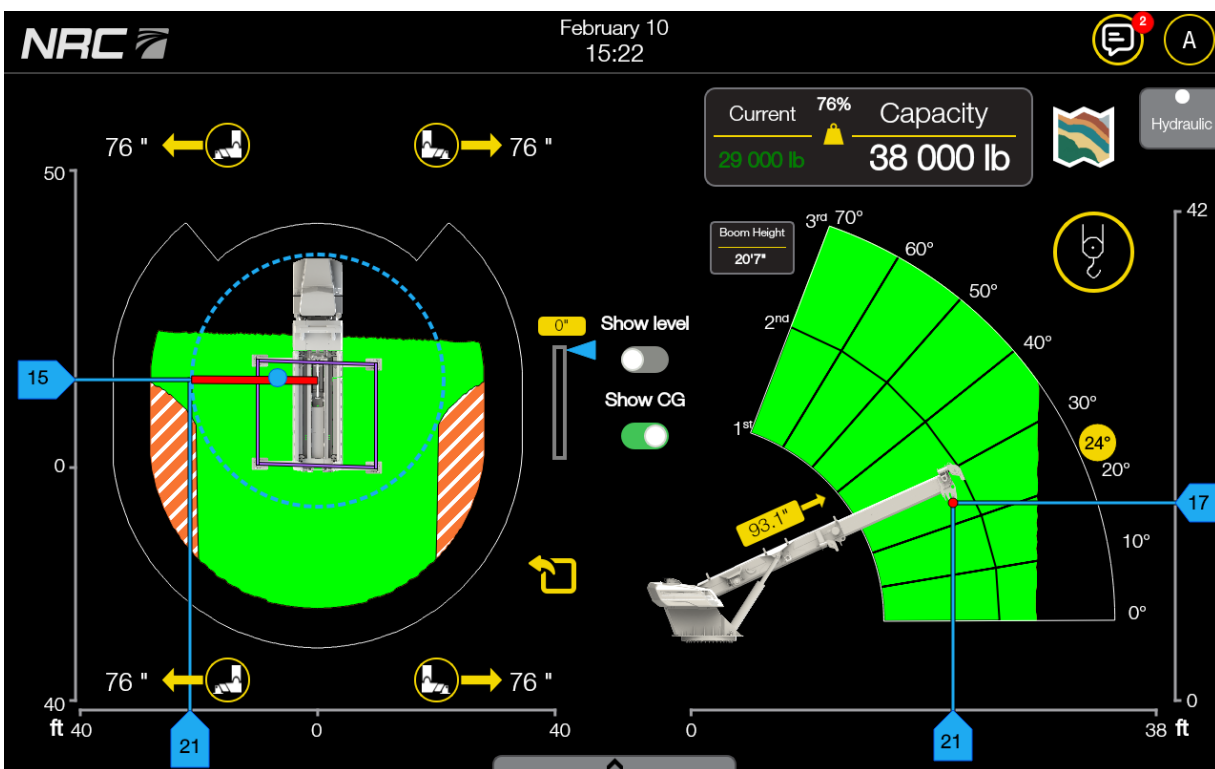


FIGURE 14 – OPERATION SCREEN – LIFTING CAPACITY IN LIFTING MODE

4.5.1 Viewing the wrecker's centre of gravity

Toggle the **Show CG** control in the middle of the screen to view the wrecker's centre of gravity.

In Figure 15, a blue dot inside a box appears over the rear of the wrecker in the top-down view. The blue dot denotes the wrecker's centre of gravity. Make sure to keep the blue dot inside the box to reduce the risk of tipping.

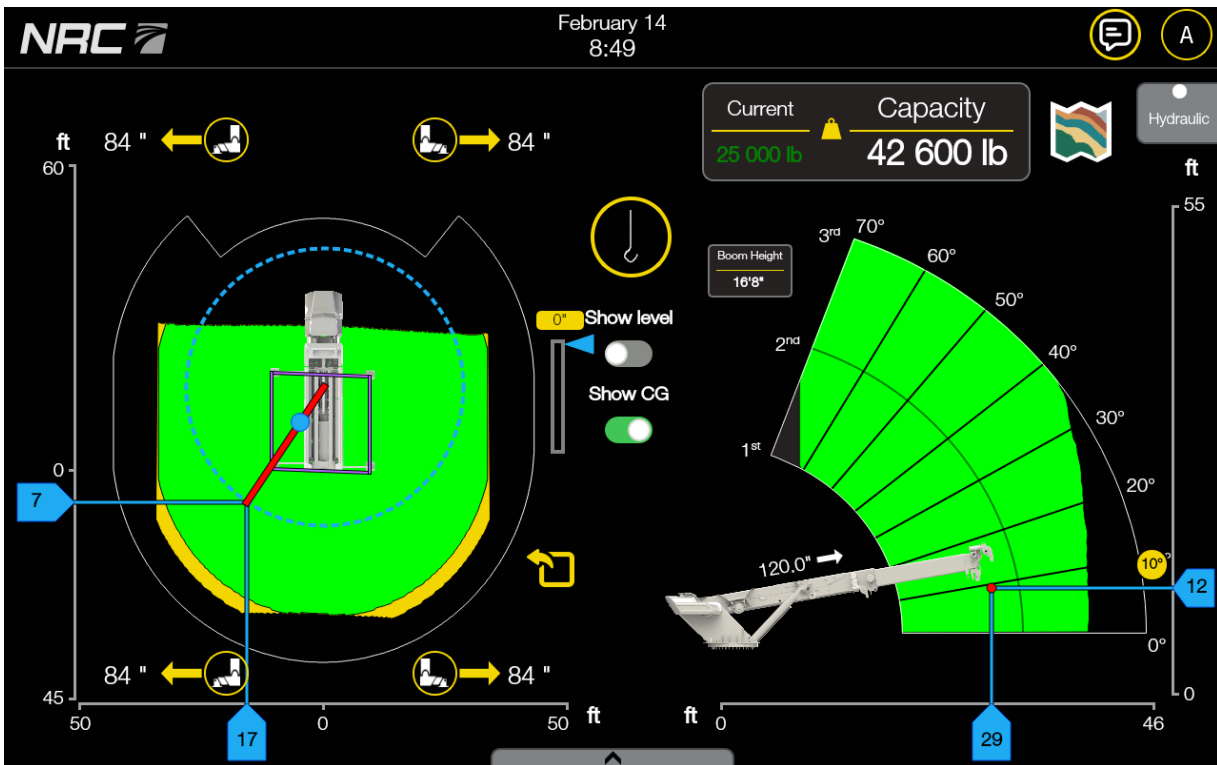



FIGURE 15 – OPERATION SCREEN – CENTRE OF GRAVITY

4.6 Viewing hydraulics

Tap the  icon in the top-right corner of the Operation screen to access the Hydraulic screen. See Chapter 6.

4.7 Operation screen use case

This section provides high-level, step-by-step instructions on how to use the Operation screen to assist site work.

NOTE: These instructions offer a general overview and may not be applicable in all situations. Refer to the Operation and Maintenance manual for information on how to operate the outriggers, sliding base, and boom.

1. Extend the outriggers to their desired lengths.
2. Check the **Show level** control to ensure outriggers have optimal leveling and minimal tilt.
3. If your wrecker is not equipped with outrigger sensors, manually input the outrigger lengths in the Operation screen.
4. Tap the **Tap to calculate** button to generate your charts.
5. Move the sliding base to the desired location.
6. Rotate the boom to the desired angle.
7. Check the top-down view and cross-reference it with the legend to obtain conservative estimates of the wrecker's lifting capacity based on the wrecker's weight and outrigger extension.
8. Extend the boom to the desired length.
9. Elevate the boom to the desired angle.
10. Check the side view and the **Current vs. Max Capacity** measurement for more precise estimates of the wrecker's lifting capability based on the wrecker's weight, outrigger extension, as well as the sliding base , and latest boom configuration.

5 JOB PLANNER SCREEN

The Job Planner screen (Figure 16) allows you to input measurements for the outriggers, sliding base, and boom, which are then used to calculate the wrecker's lifting capacities. This helps you plan your operations by providing insights into the wrecker's lifting capacities based on different setups.

NOTE: The Job Planner and Operation screens have similar layouts. While the Job Planner screen requires manual input of measurements, the Operation screen detects them automatically during the operation itself.



FIGURE 16 – JOB PLANNER SCREEN

Configurable measurements in the Job Planner screen:

- **Outrigger lengths:** Drag the outrigger nodes along their corresponding sliders to adjust their lengths or tap the outrigger values to input their lengths.
- **Sliding base position:** Tap the sliding base value to input its travel distance or drag the cursor.
- **Boom rotation:** Drag the red line in a circular motion in the top-down view or tap the rotation value to input the rotation.
- **Boom length:** Tap the boom extension value to input the length or drag the red dot at the end of the boom.
- **Boom angle:** Tap the boom angle value to input the angle or drag the red dot at the end of the boom.

Refer to Section 4 for guidance on interpreting the screen and how measurements affect lifting capacities.

5.1 Previewing lifting capacities

After configuring every measurement in the Job Planner screen, tap anywhere in the side view visualization to preview the wrecker's lifting capacity at the selected location.

NOTE: To preview the wrecker's lifting capacity, relevant values in Truck Settings must be filled out (see Section 8.4.3).

As shown in Figure 17, the yellow dot indicates the area selected by the user. The accompanying details specifies that, in order for the boom to achieve a capacity of 34,500 lb, it must be 247" long and positioned at 50° — accounting for the outrigger and sliding base configuration.

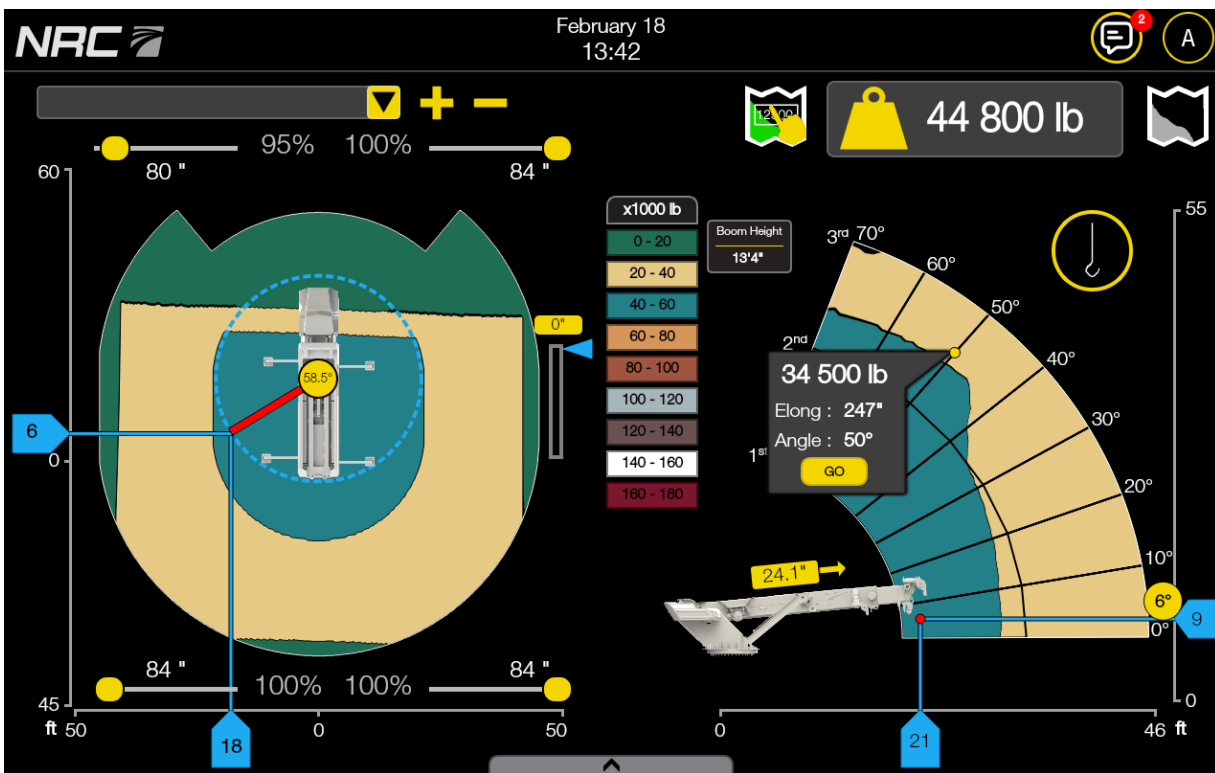


FIGURE 17 – JOB PLANNER SCREEN – PREVIEWING LIFTING CAPACITIES

5.2 Previewing lifting mode


Tap the  icon at the top of the side view to input a weight and view an estimation of the boom's range of motion with that load while accounting for the wrecker's weight and outrigger, sliding base, and boom rotation configuration.

Figure 18 shows the boom's range of motion with the following configuration:

- Inputted weight: 28,000 lb
- Outriggers: 76"
- Sliding base: 0"
- Boom rotation: 90.0°

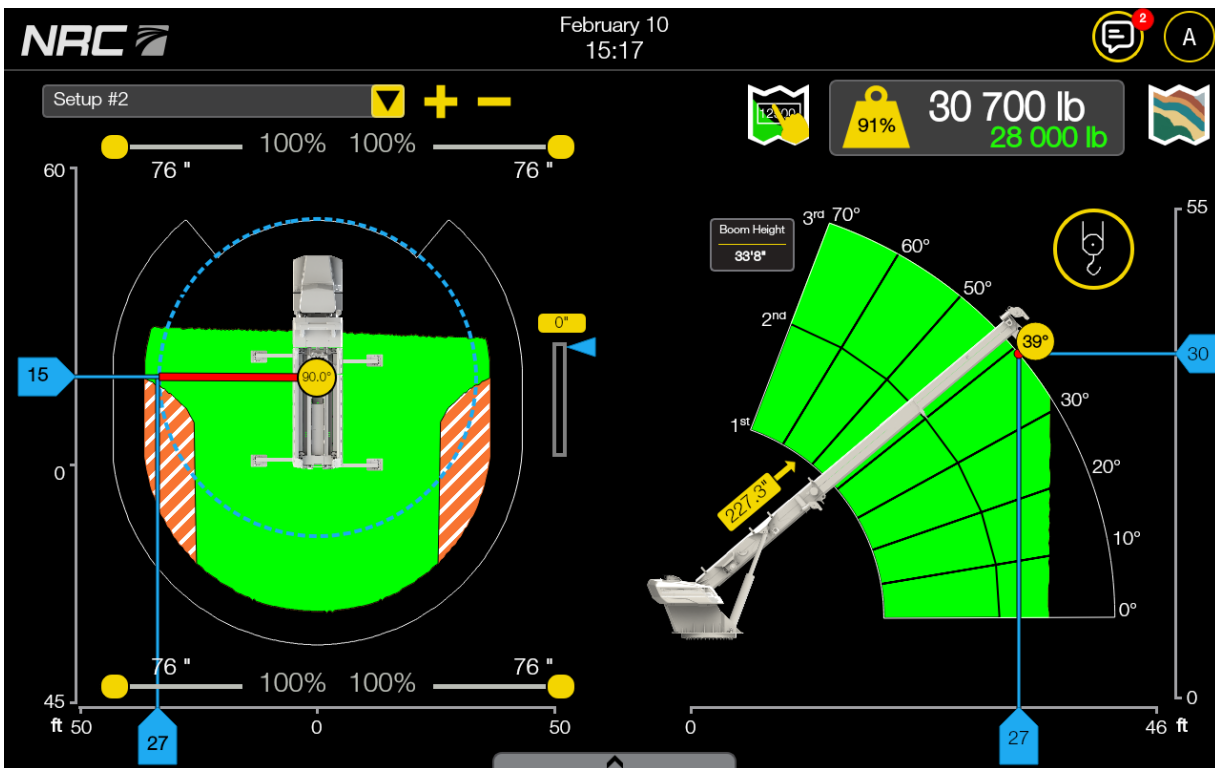



FIGURE 18 – JOB PLANNER SCREEN – LIFTING MODE

Tap the  icon in the top-right corner to return to the default Job Planner screen (chart mode).

5.3 Saving and viewing setups

Tap the **+** icon to save your current setup. Tap the **-** icon next to it to remove a saved setup.

To access one of your setups, tap the dropdown menu and choose the desired setup.

NOTE: You cannot modify an existing setup. To update a setup, make the desired changes and save it as a new setup. Then, delete the previous setup.

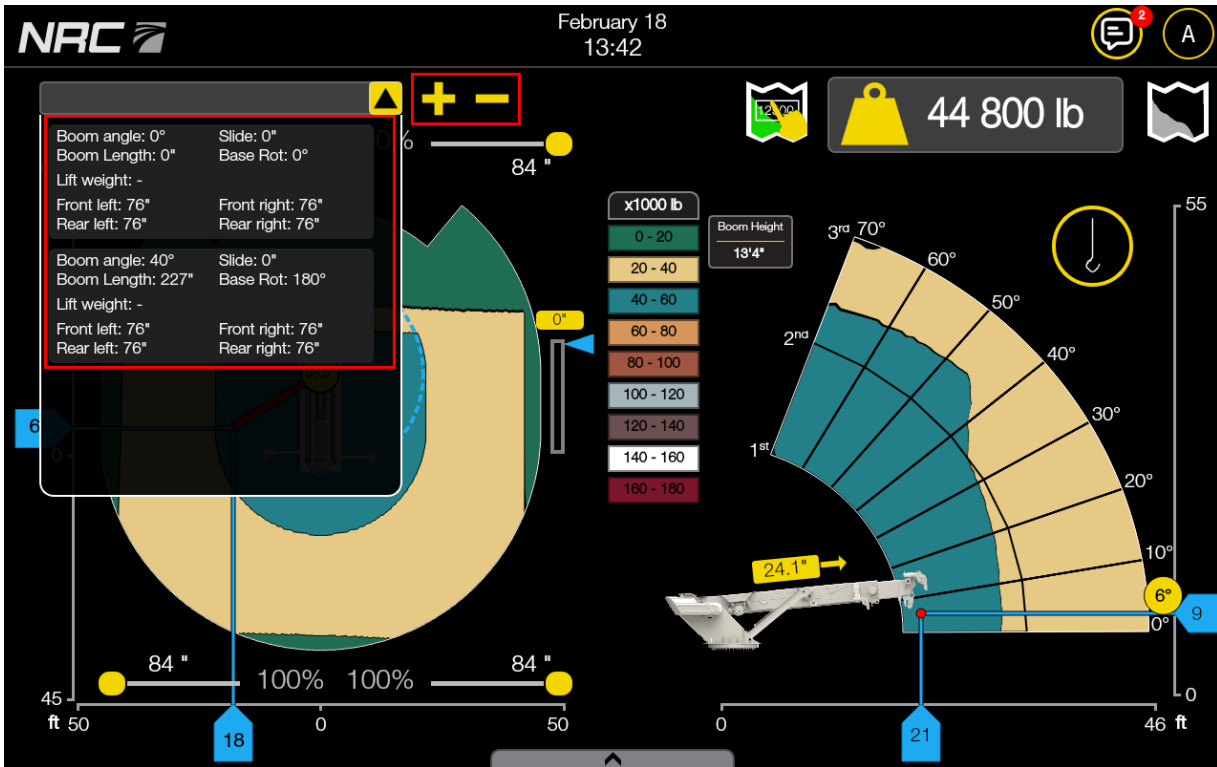



FIGURE 19 – JOB PLANNER SCREEN – SAVING SETUPS

5.4 Exporting from Operation

Tap  in the Operation screen to export the current outrigger, sliding base, and boom configurations to the Job Planner.


Importing a setup into the Job Planner allows you to save it for future use. For example, even at a different job site, you can refer to your imported setups to confirm that you can lift a certain load – provided you configure your outrigger, sliding base, and boom appropriately.

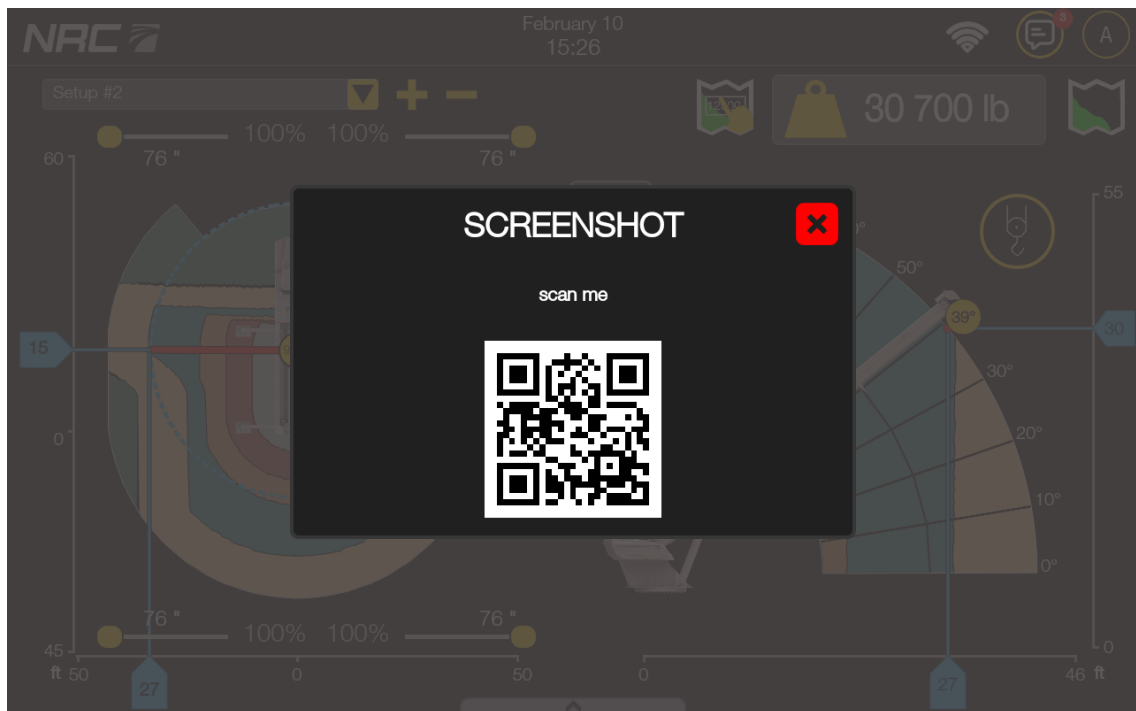
5.5 Taking a screenshot

After connecting the V1200 to an Internet network (see Section 8.5), you can take a screenshot of the current setup in the Job Planner and download it to another device (e.g. phone, tablet) to include the screenshot in reports.

NOTE: To download a screenshot, the V1200 and your device must be connected to the same network.

To download a screenshot to your device:

1. Tap  below the colour-coded legend to take a screenshot of the current Job Planner configuration.
2. Using your device, scan the QR code in the dialog that appears.



3. On your device, a webpage will appear. Download the screenshot.

6 HYDRAULIC SCREEN

The Hydraulic screen shows various real-time metrics about the wrecker, the outriggers, and the boom.

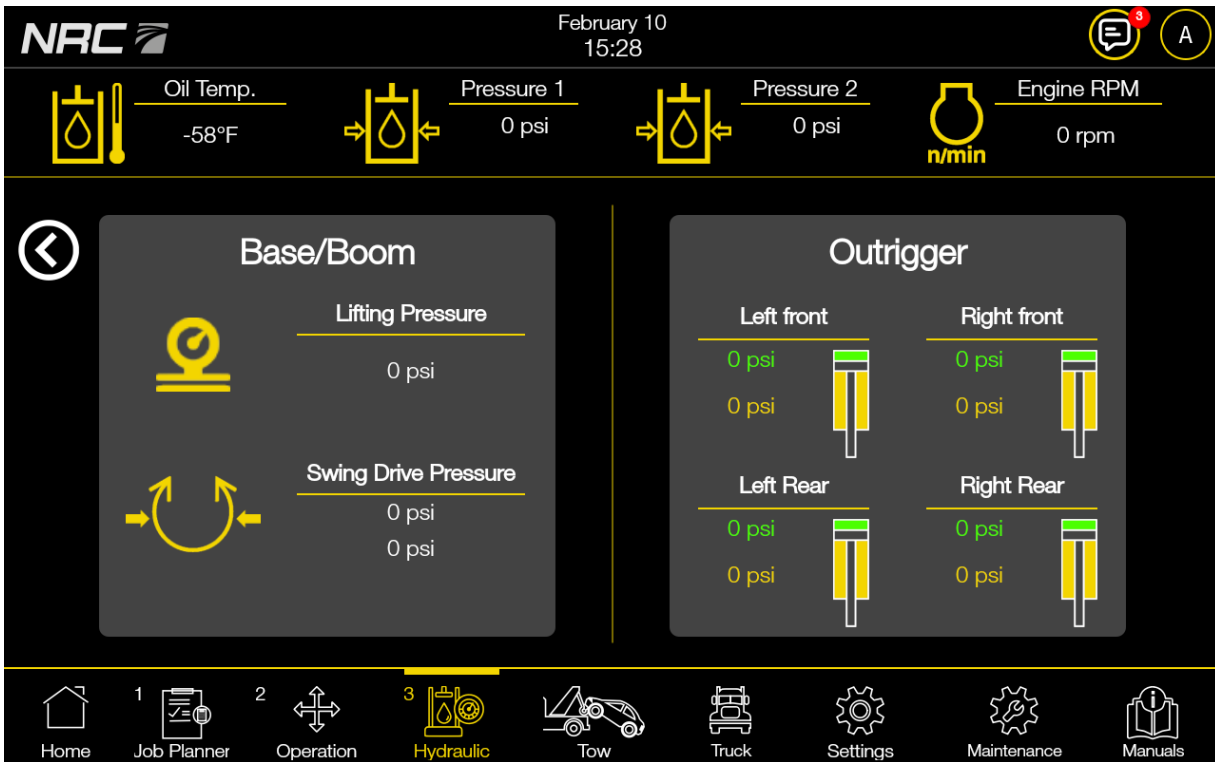


FIGURE 20 – HYDRAULIC SCREEN

TABLE 5 – HYDRAULIC SCREEN

| Element | Description |
|------------|---|
| Oil flow | Shows the rate of the oil flow in the system. |
| Oil temp. | Shows the oil temperature. |
| Pressure | <ul style="list-style-type: none"> • Upper value: Pump pressure. • Lower value: X port pump pressure. |
| Pump Actu. | Shows the percentage of hydraulic pump activation. |

| Element | Description |
|----------------------------|--|
| Engine RPM | Shows the wrecker's engine rotation per minute. |
| Base/Boom Lifting Pressure | Shows the hydraulic pressure required to lift the boom at its base. |
| Swing Drive Pressure | Shows the hydraulic pressure required to rotate the boom. |
| Outriggers | <p>Shows the hydraulic pressure of the outriggers' leg cylinders.</p> <ul style="list-style-type: none"> • Green: Piston side • Yellow: Rod side |

7 TRUCK SCREEN

The Truck screen of the touchscreen interface (Figure 21) allows you to view information about the truck's status.

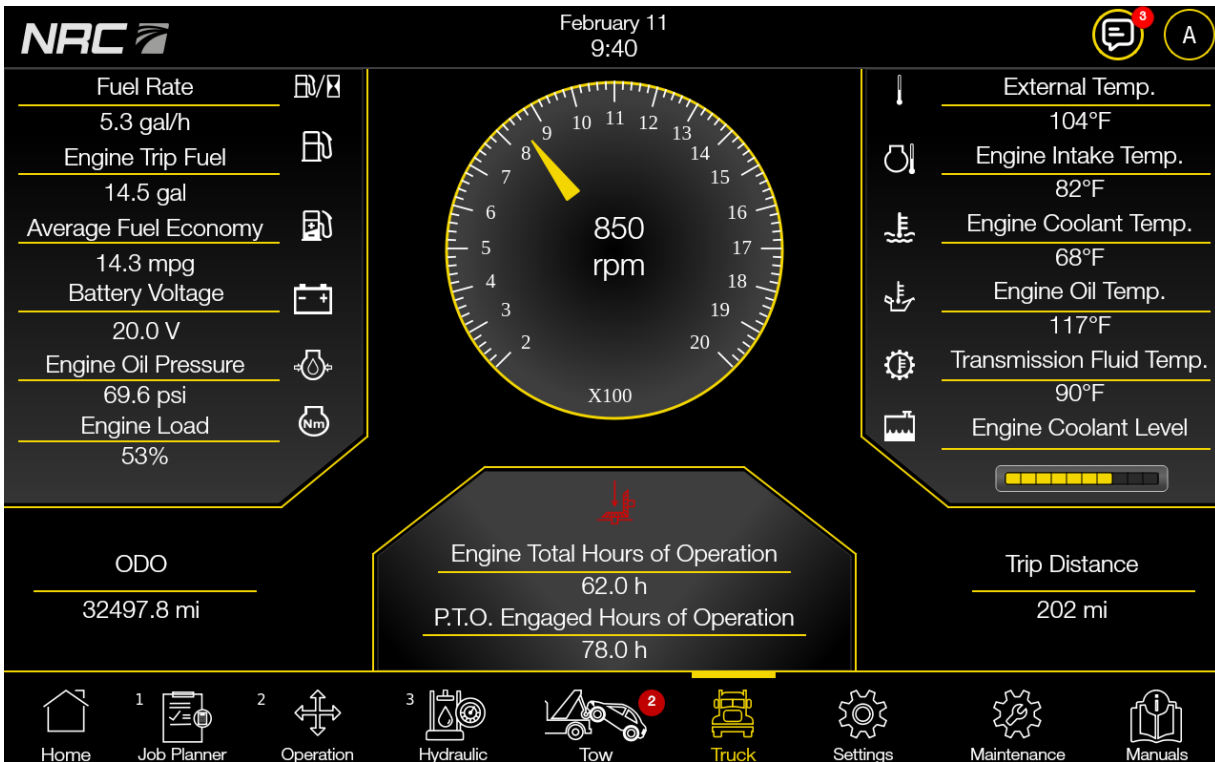





FIGURE 21 – TRUCK SCREEN

TABLE 6 – TRUCK SCREEN DESCRIPTIONS

| Element | Description |
|---|--|
| Fuel Rate | The rate at which fuel is being consumed. |
| Engine Trip Fuel | The total fuel used for the current trip. |
| Average Fuel Economy | The average distance the vehicle can travel on a certain amount of fuel. |
| Battery Voltage | The battery voltage. |
| Engine Oil Pressure | The engine oil pressure. |
| Engine Load | The torque output of the engine. |
| External Temp. | The current outside temperature. |
| Engine Intake Temp. | The engine intake temperature. |
| Engine Coolant Temp. | The engine coolant temperature. |
| Engine Oil Temp. | The engine oil temperature. |
| Transmission Fluid Temp. | The transmission fluid temperature. |
| Engine Coolant Level | The engine coolant level. |
|  | The engine speed. |
| ODO | Odometer. The total distance travelled. |
| Total Idle Hours | The total engine idle time in hours. |
| Engine Total Hours of Operation | The total engine operation time in hours. |
| P.T.O. Engaged Hours of Operation | The total number of hours of operation with the P.T.O. engaged. |

| Element | Description |
|---|--|
|  | P.T.O. engaged. |
|  | P.T.O. disengaged. |
| Trip Distance | The distance travelled for the current trip. |

8 SETTINGS SCREEN

The Settings screen of the touchscreen interface allows you to control the interface's settings.

8.1 General settings

In the General settings (Figure 22), you can view and edit information about the truck and touchscreen interface.

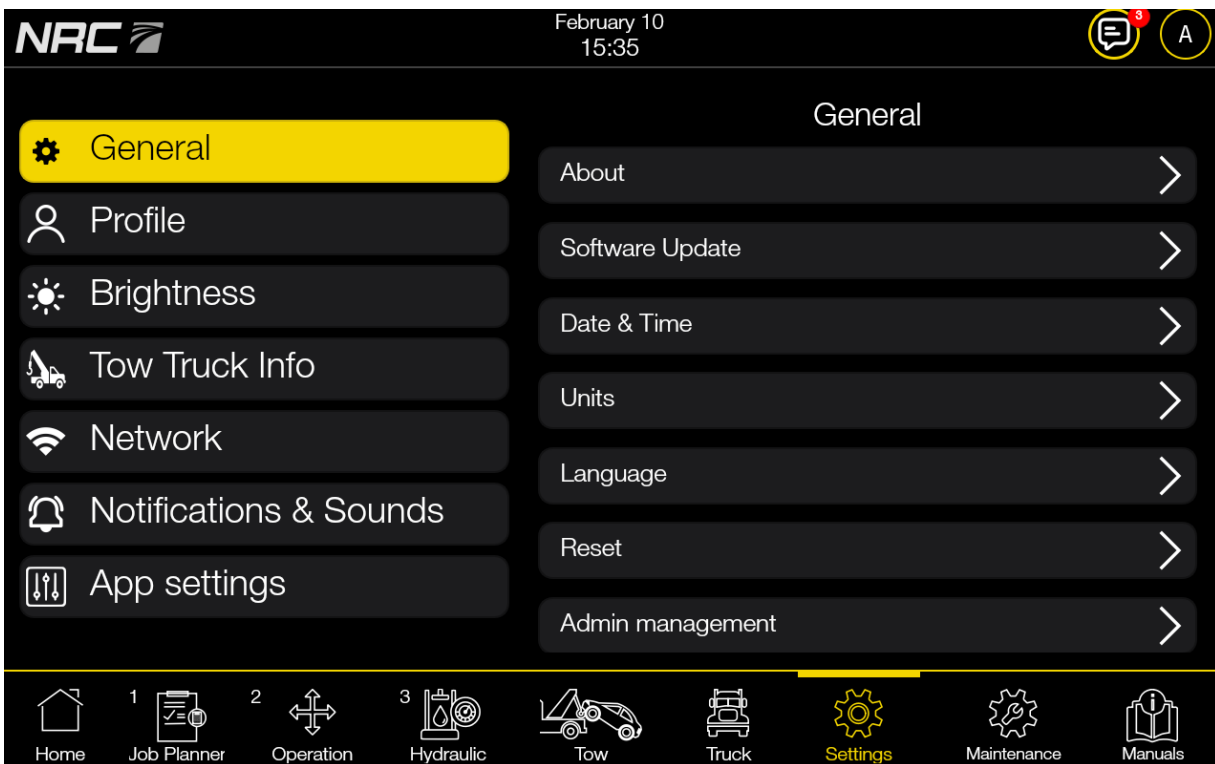


FIGURE 22 – GENERAL SETTINGS SCREEN

NOTE: The Admin management option is only visible to administrators.

8.1.1 Viewing the touchscreen interface information

To view the touchscreen interface information, tap **General**, then **About**. You will see the following:

- Software version
- Model name
- Serial number

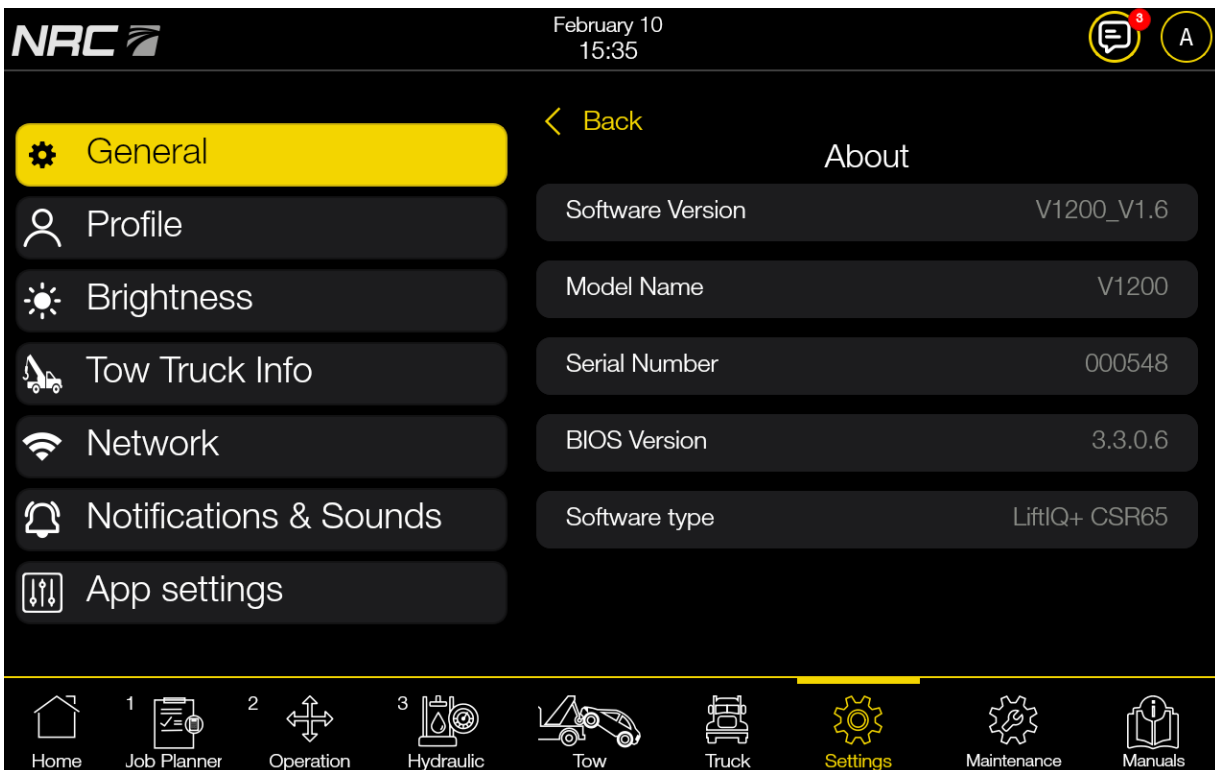


FIGURE 23 – ABOUT INFORMATION

8.1.2 Editing the date and time settings

To edit the date and time settings, tap **General**, then **Date & Time**.

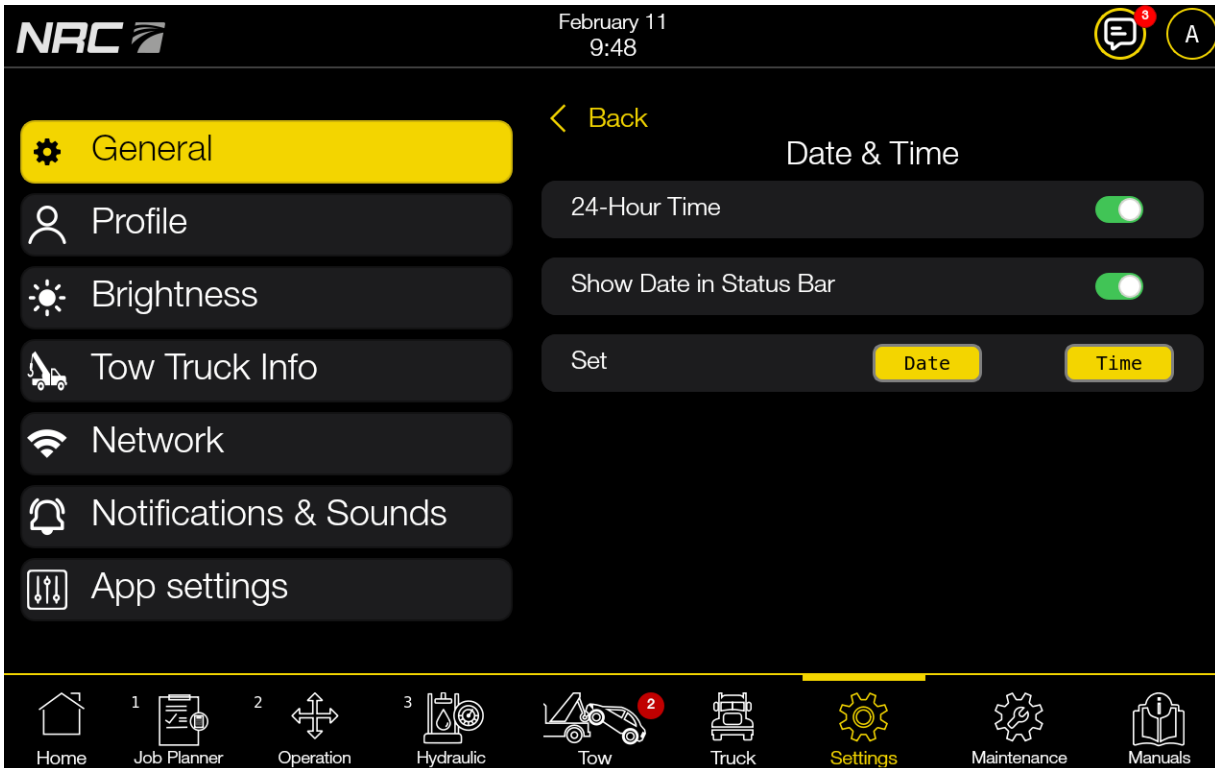


FIGURE 24 – DATE AND TIME SETTINGS

You can change the following settings:

- **24-Hour Time:** When toggled ON, the time is displayed in 24-hour format. When toggled OFF, the time is displayed in 12-hour format.
- **Show Date in Status Bar:** When toggled ON, the status bar at the top of the screen shows the date. When toggled OFF, the status bar does not show the date.
- **Set Date and Time:** See Section Setting the date and Section Setting the time.

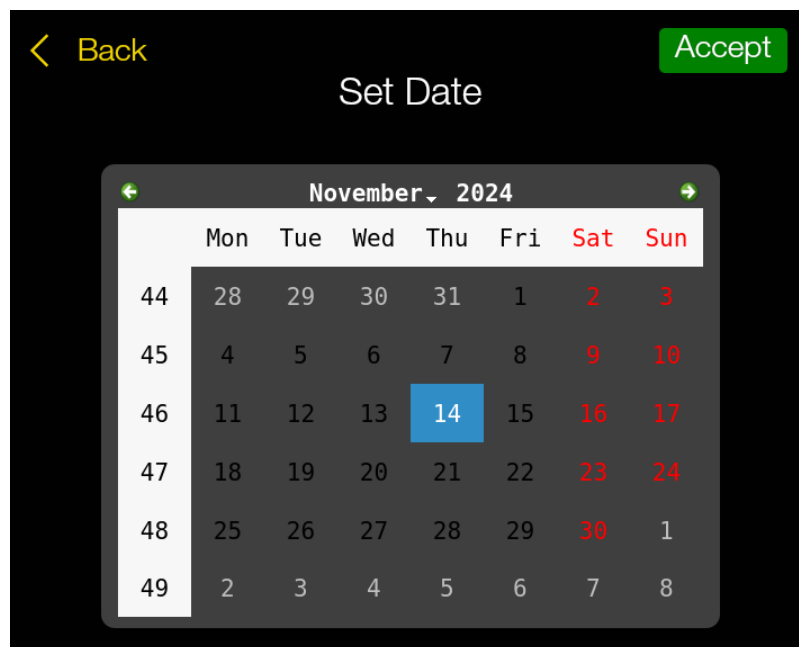
Setting the date

To set the date:

1. Next to **Set**, tap **Date**.



2. A calendar picker will appear. Set the date. You can change the month using the arrows.



3. Tap **Accept** in the upper right corner.

Setting the time

To set the time:

1. Next to **Set**, tap **Time**.



2. Scroll up or down through the hour and minute pickers to set the time.



3. Tap **Save** to set the time, or **Cancel** to abandon your changes.

8.1.3 Editing the unit settings

To edit the unit settings, tap **General**, then **Units**.

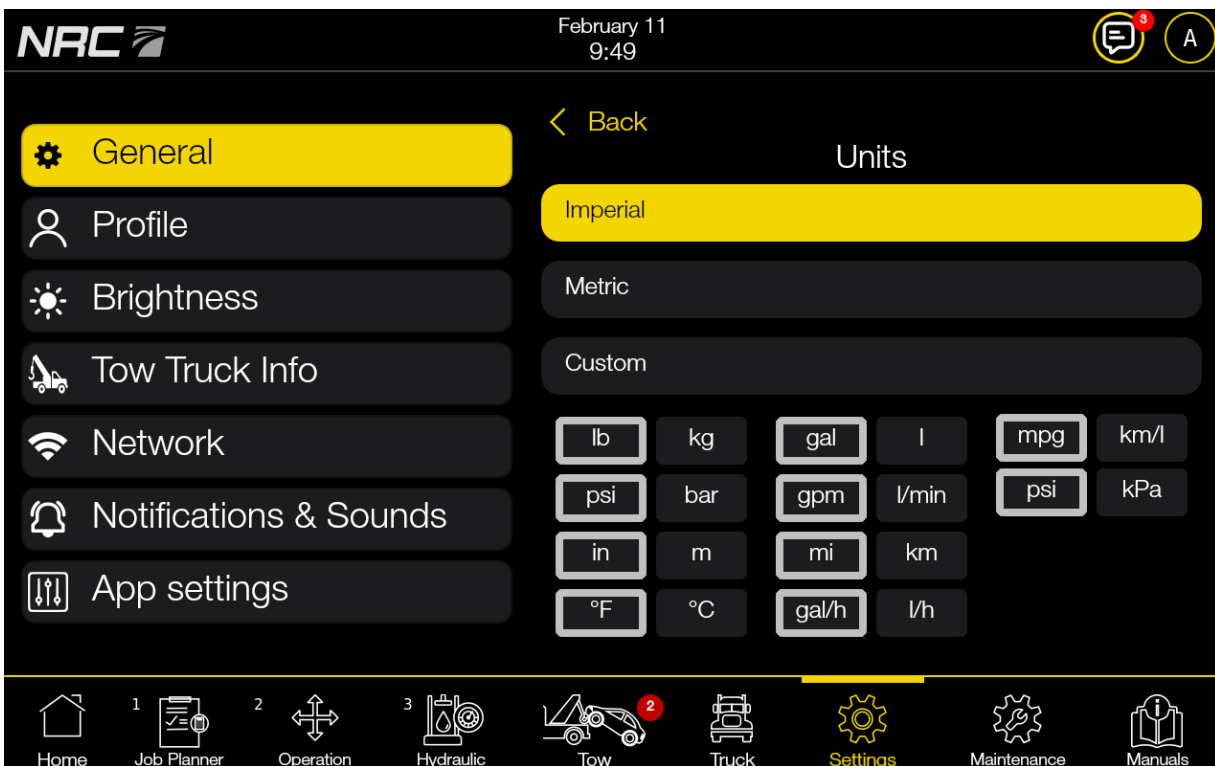


FIGURE 25 – UNIT SETTINGS

You can select from the following:

- **Imperial:** Use imperial units only.
- **Metric:** Use metric units only.
- **Custom:** Select which units you want to use. You can only select one option from each pair (see Table 7).

TABLE 7 – CUSTOM UNIT DESCRIPTIONS

| Element | Description |
|-------------|--|
| lb / kg | pounds / kilograms |
| psi / bar | pounds per square inch / bar |
| in / m | inch / metre |
| °F / °C | degrees Fahrenheit / degrees Celsius |
| gal / l | gallon / litre |
| gpm / l/min | gallons per minute / litres per minute |
| mi / km | miles / kilometres |
| gal/h / l/h | gallons per hour / litres per hour |
| mpg / km/l | miles per gallon / kilometres per litre |
| psi / kPa | pounds per square inch / kilopascals These units are for displaying oil pressure. |

8.1.4 Editing the language settings

To edit the language settings, tap **General**, then **Language**.

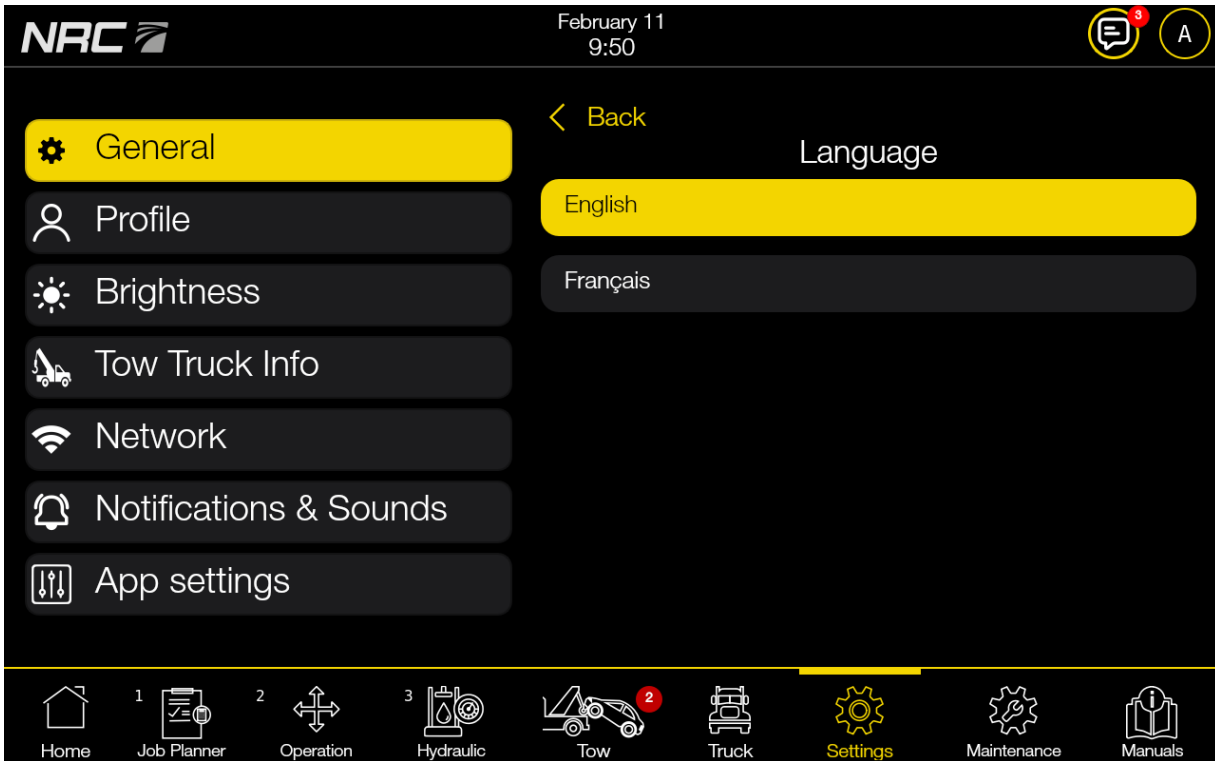


FIGURE 26 – LANGUAGE SETTINGS

You can select from the following:

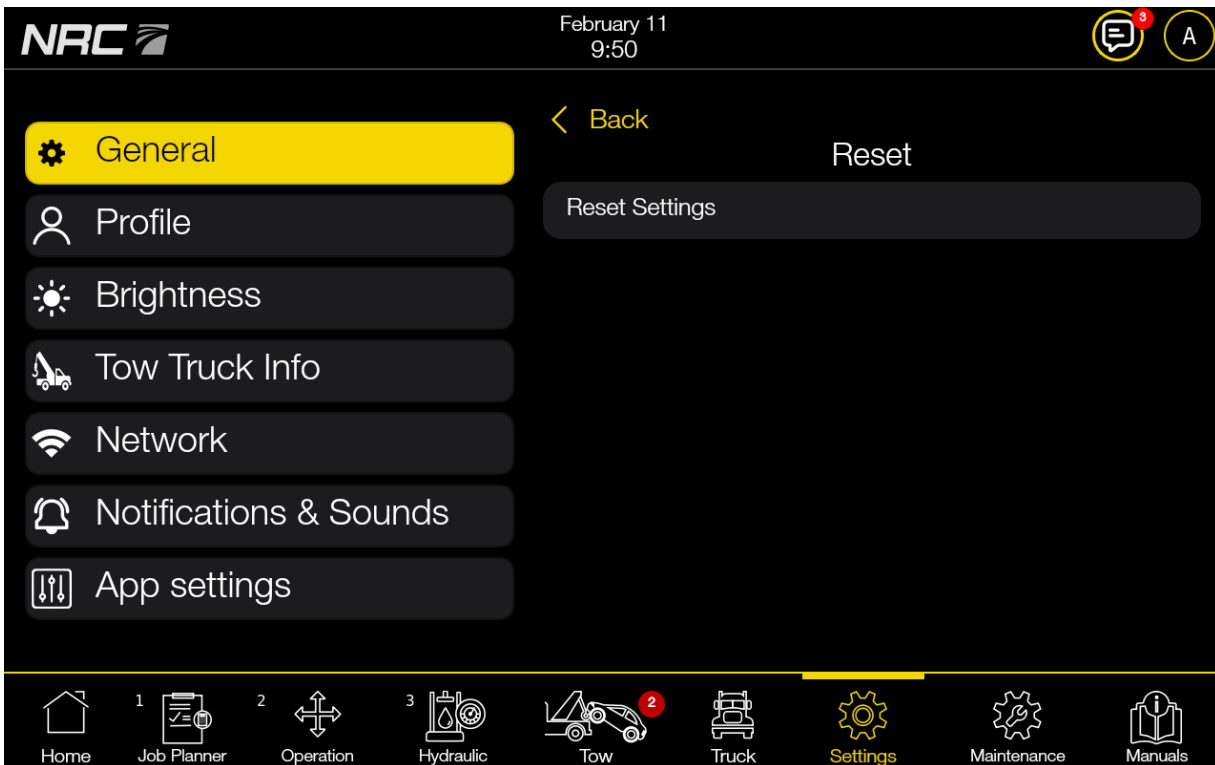
- **English**
- **Français**

8.1.5 Resetting the settings

To reset the interface's settings back to their initial values, tap **General**, then **Reset**.

To reset the settings:

1. Tap **Reset Settings**.
2. Tap **OK** in the window that appears.



8.1.6 Editing the admin management settings

To edit the admin management settings, tap **General**, then **Admin management**.

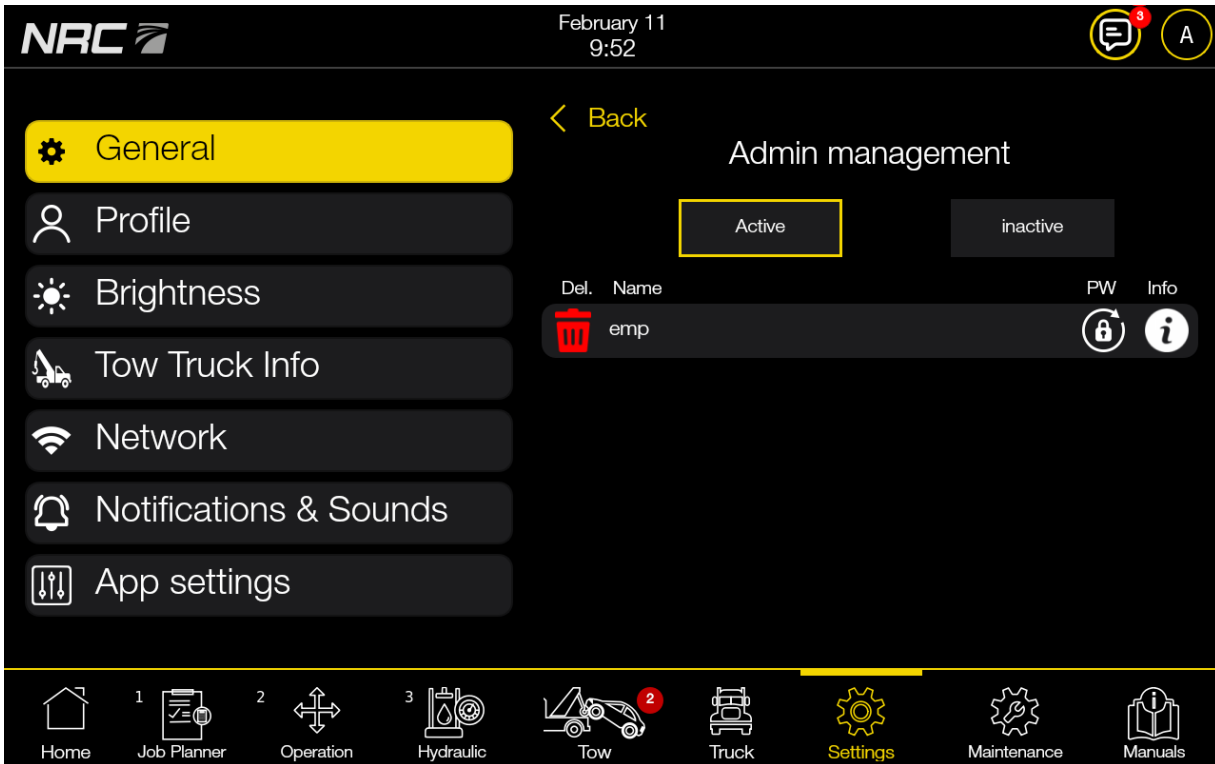





FIGURE 27 – ADMIN MANAGEMENT SETTINGS (ACTIVE PROFILES)

The Active filter shows active profiles (Figure 27). You can do the following:

- Tap  to make a profile inactive.
- Tap  to change a profile's password.
- Tap  to view profile information.

The Inactive filter shows inactive profiles. A user cannot log into an inactive profile, but its comments and completed tasks are visible in the interface.

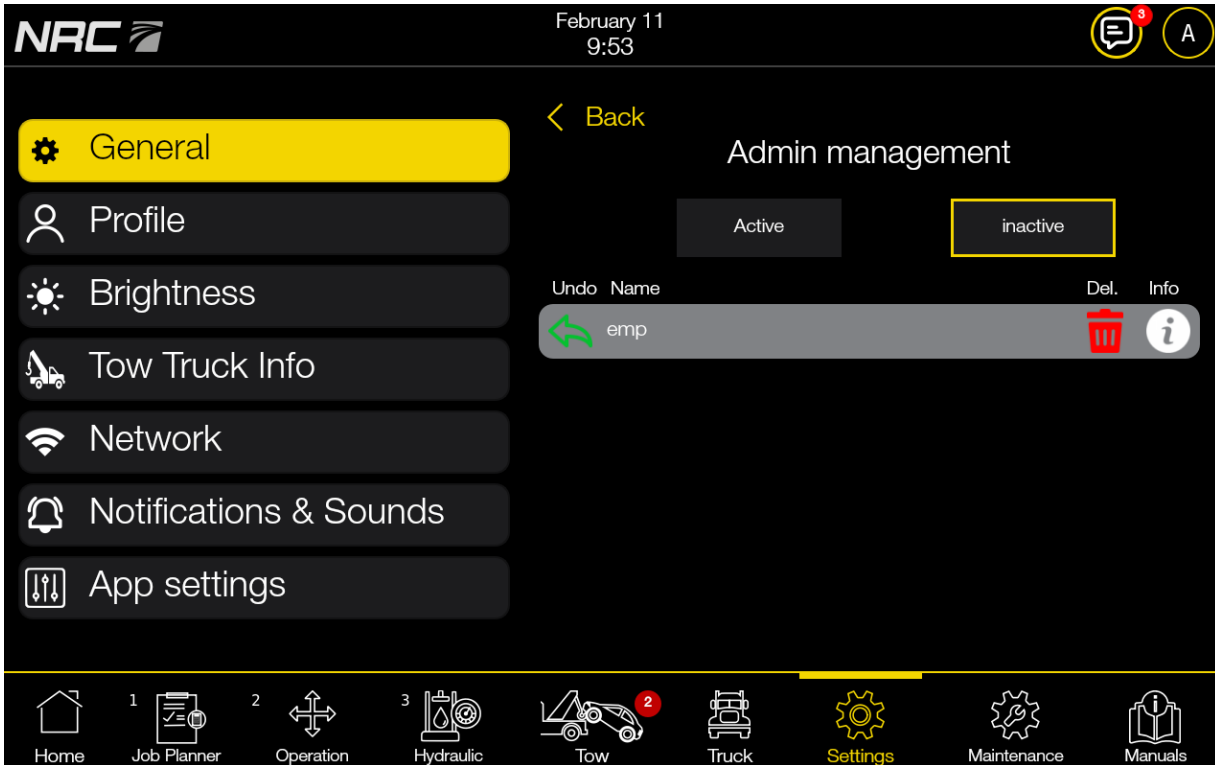





FIGURE 28 – ADMIN MANAGEMENT SETTINGS (INACTIVE PROFILES)

You can do the following:

- Tap  to enable a profile.
- Tap  to permanently delete a profile.
- Tap  to view profile information.

8.2 Profile settings

In the Profile settings (Figure 29), you can view and edit your profile information.

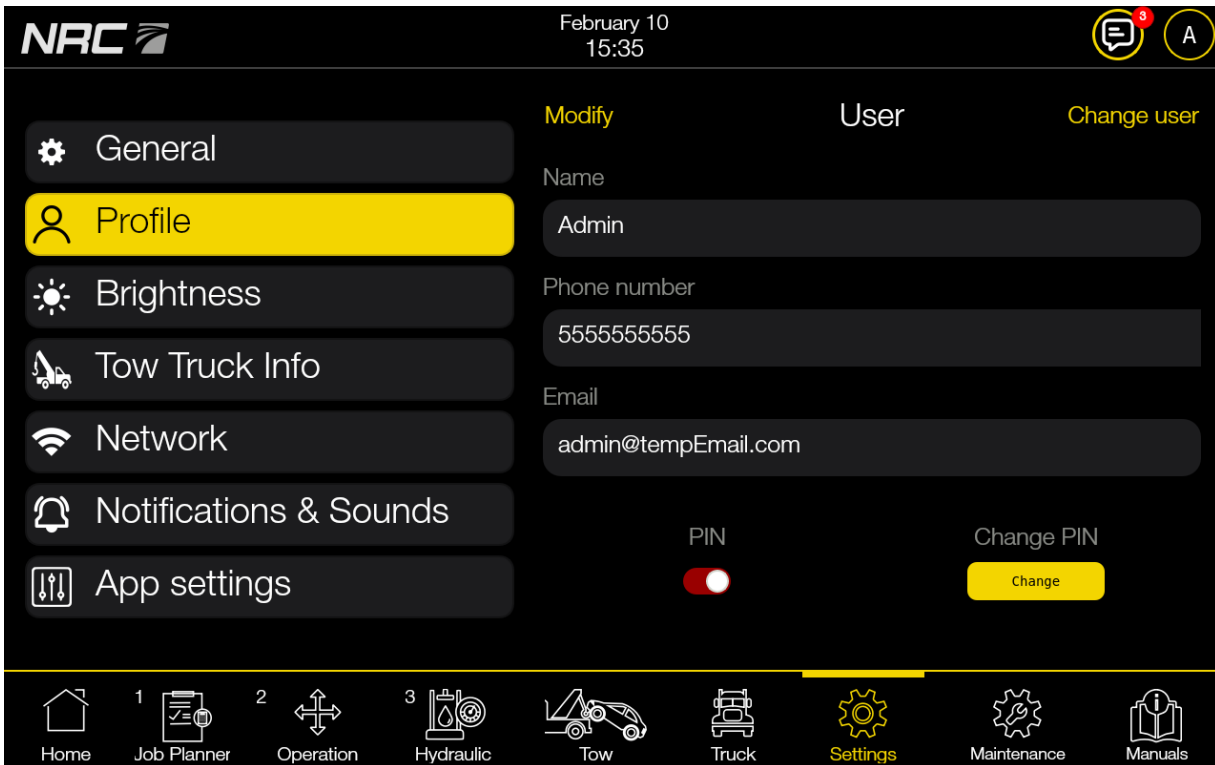


FIGURE 29 – PROFILE SETTINGS SCREEN

NOTE: You can only edit the profile that is currently logged in.

To edit your profile:

1. Tap **Modify**. The text will change to say **OK**.
2. Edit the elements (Table 8) you want to change.
3. Tap **OK**.

TABLE 8 – PROFILE SETTINGS DESCRIPTIONS

| Element | Description |
|--------------|---|
| Change user | Logs you out. |
| Name | Your username. |
| Phone number | Your phone number. |
| Email | Your email address. |
| PIN | Toggle ON to use a PIN. Toggle OFF to not use a PIN. |
| Change PIN | Tap Change to edit your PIN. |

8.3 Brightness settings

In the Brightness settings (Figure 30), you can view and edit the screen brightness for the touchscreen interface.

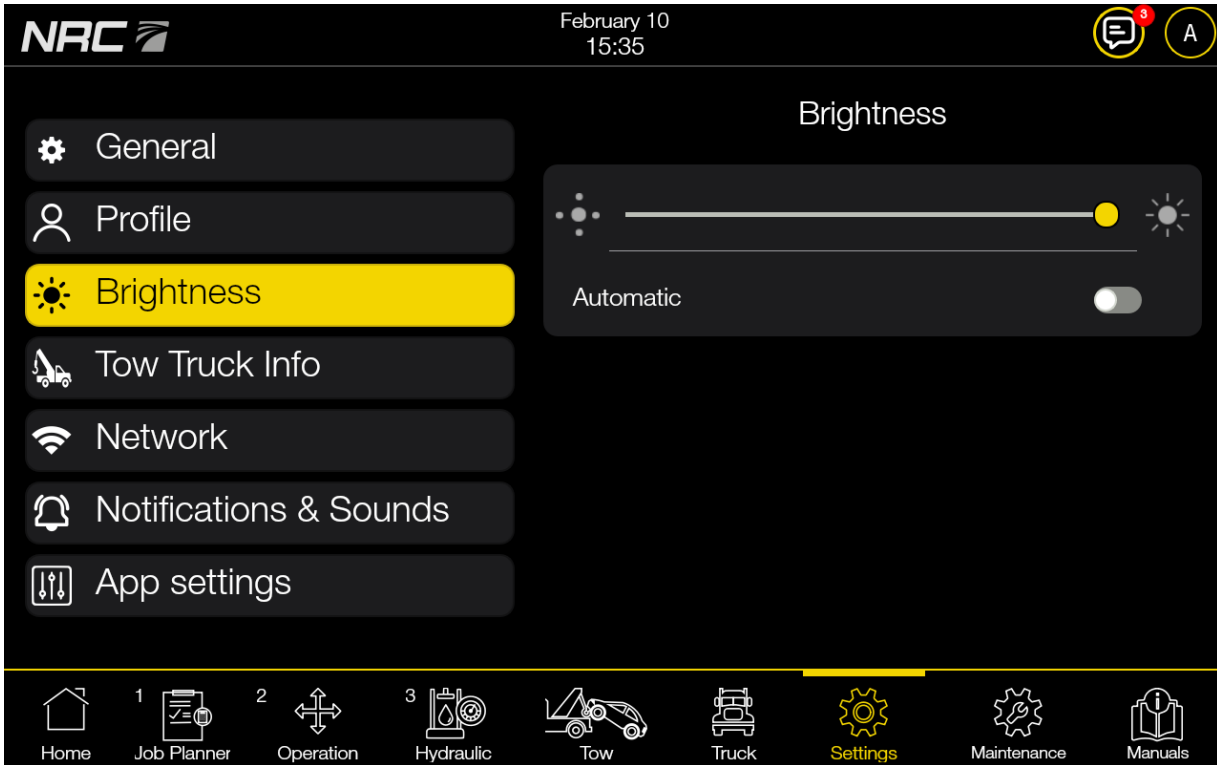

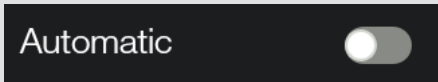


FIGURE 30 – BRIGHTNESS SETTINGS SCREEN

TABLE 9 – BRIGHTNESS SETTINGS DESCRIPTIONS

| Element | Description |
|---|--|
|  | Adjusts the screen brightness. |
|  | When toggled ON, the screen will automatically adjust its brightness according to its surroundings. When toggled OFF, the screen brightness must be manually adjusted. |

8.4 Tow truck information

In the Tow Truck Infos section, you can view information about the tow truck.

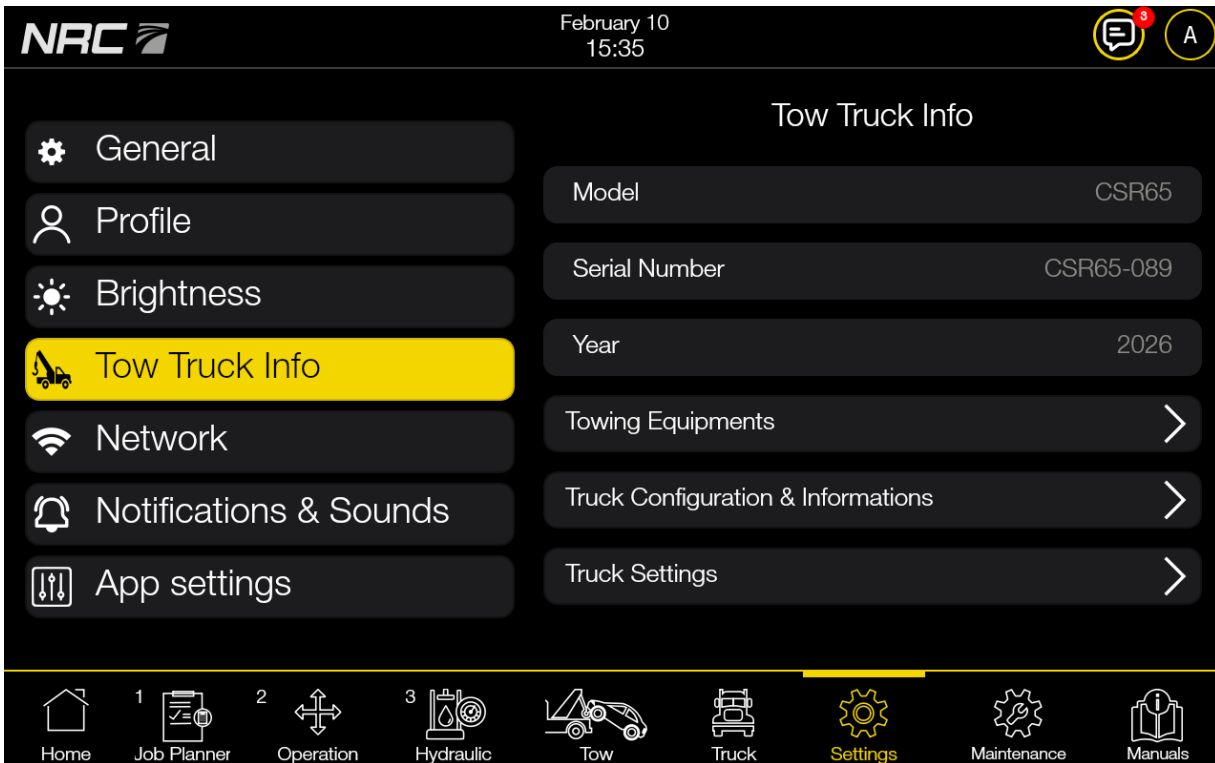


FIGURE 31 – TOW TRUCK INFORMATION SCREEN

TABLE 10 – TOW TRUCK INFORMATION DESCRIPTIONS

| Element | Description |
|------------------------------------|----------------------|
| Model | CSR's model number. |
| Serial Number | CSR's serial number. |
| Year | CSR's model year. |
| Towing Equipments | See Section 8.4.1. |
| Truck Configuration & Informations | See Section 8.4.2. |
| Truck Settings | See Section 8.4.3 |

8.4.1 Towing Equipments

To view the towing equipment information, tap **Tow Truck Infos**, then **Towing Equipments**.

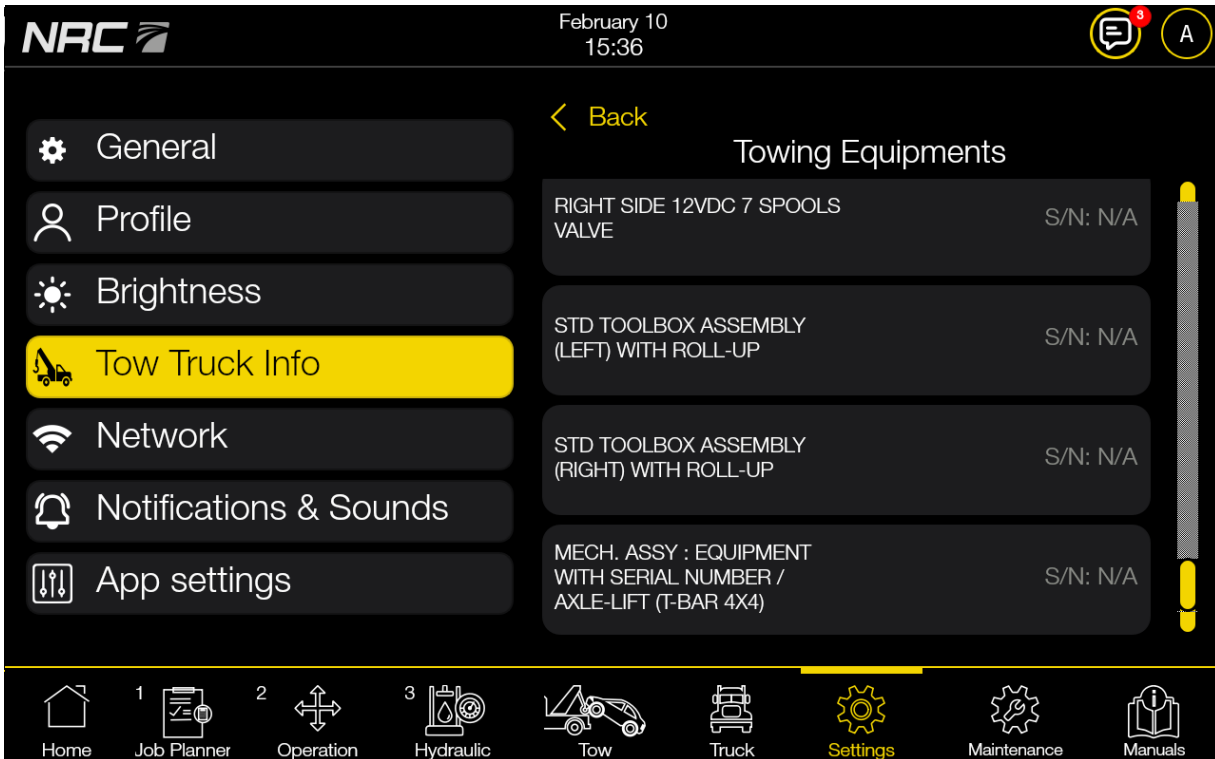


FIGURE 32 – TOWING EQUIPMENTS SCREEN

You can view the following:

- Equipment parts
- Equipment part serial numbers

8.4.2 Truck Configuration & Informations

To view truck configuration information, tap **Tow Truck Infos**, then **Truck Configuration & Informations**.

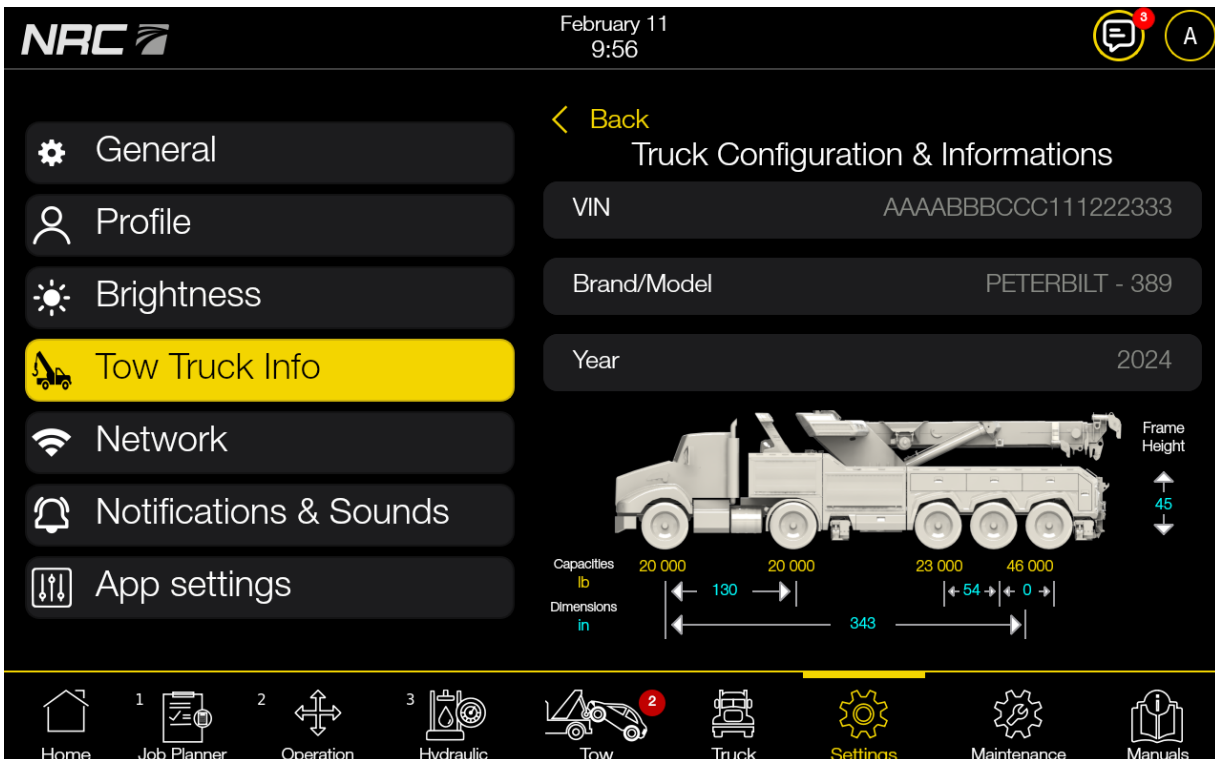


FIGURE 33 – TRUCK CONFIGURATION & INFORMATIONS SCREEN

You can view the following:

- **VIN:** Truck's serial number.
- **Brand/Model:** The brand and model of the truck.
- **Year:** Truck's model year.
- **Frame Height:** The frame height of the truck.
- **Capacities:** The axle capacities.
- **Dimensions:** The truck dimensions.

To change the units for **Frame Height**, **Capacities** or **Dimensions**, see Section 8.1.3.

8.4.3 Truck Settings

To view truck configuration information, tap **Tow Truck Info**, then **Truck Settings**.

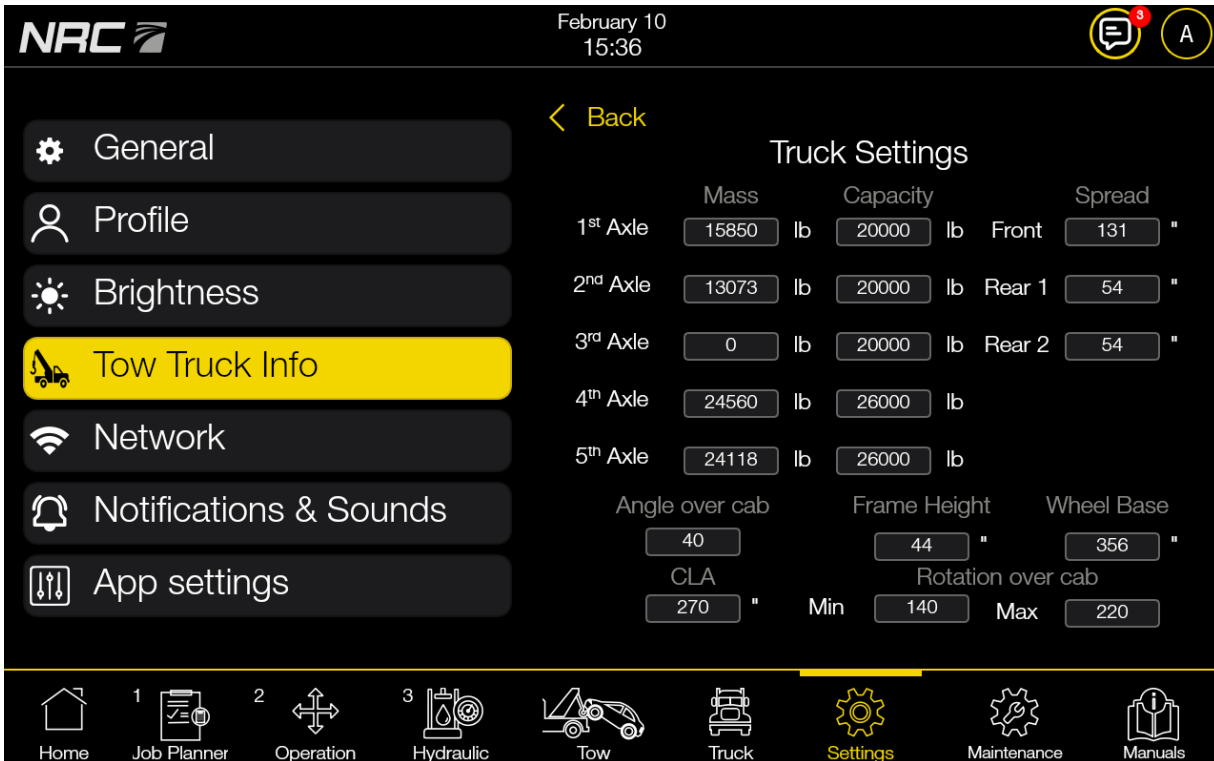


FIGURE 34 – TRUCK SETTINGS SCREEN

You can view the following:

- **Mass:** Axle load used in the center of mass calculation.
- **Spread:** Distance center to center between two axles.
 - Front: Distance between the two front axles.
 - Rear 1: Distance between the third and fourth axles.
 - Rear 2: Distance between the fourth and fifth axles.
- **Frame Height:** The frame height of the truck.
- **Wheel Base:** Distance between the center of the front and the rear axle. If the truck has a tandem axle, this value is the distance between the center of the front and the tandem axle.
- **Angle over cab:** Boom angle to clear the cab while rotating.

- **Rotation over cab:** Boom rotation angle range within which the boom is over the cab.
- **CLA:** Distance between the cab and the last axle.

To change the units, see Section 8.1.3.

8.5 Network settings

In the Network settings, you can connect the V1200 to an Internet network.

NOTE: You can create a hotspot on your device and connect the V1200 to it.

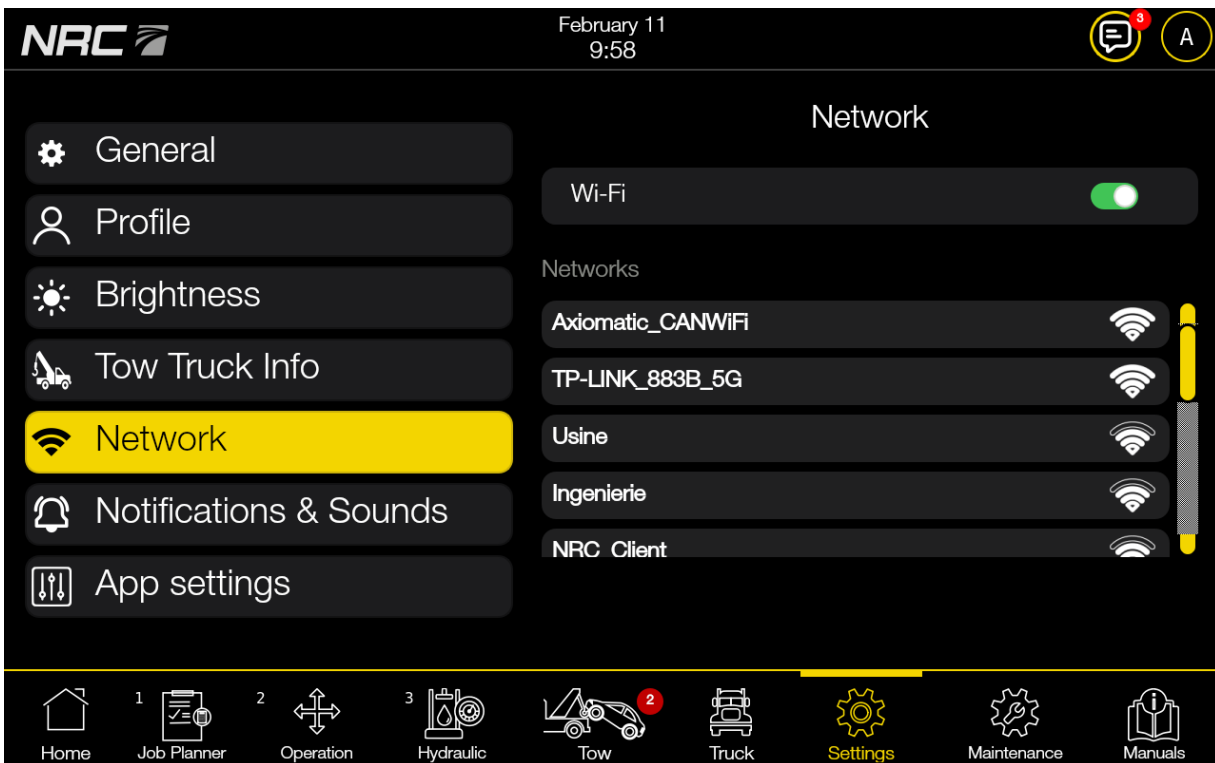


FIGURE 35 – NETWORK SCREEN

Connecting the V1200 to the Internet allows the software to automatically download and install updates.

If you connect V1200 and another device (e.g. phone, tablet) to the same network, you can download a screenshot of the Job Planner to your device (see Section 5.5).

To connect the V1200 to a network:

1. On the **Settings** screen, select the **Network** menu option.
2. Ensure that the Wi-Fi toggle is on.



3. Select a network from the list of networks. Enter credentials if necessary. If the connection is successful, a Wi-Fi symbol will appear in the upper right of the screen.



8.6 Notifications and sound settings

In the Notifications & Sounds settings (Figure 36), you can view and edit the notification and sound settings.

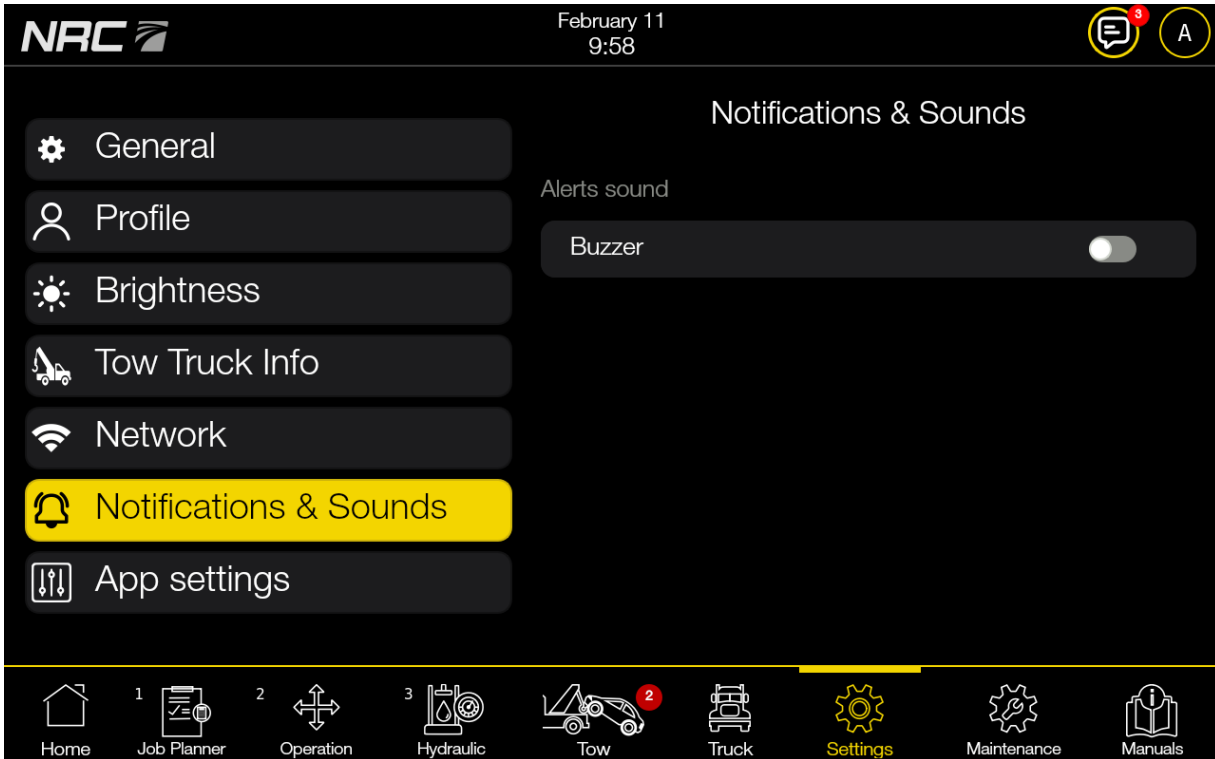


FIGURE 36 – NOTIFICATIONS & SOUNDS SETTINGS SCREEN

TABLE 11 – NOTIFICATIONS & SOUNDS SETTINGS DESCRIPTIONS

| Element | Description |
|--------------|--|
| Alerts sound | When toggled ON, the interface will beep when you receive a notification. When toggled OFF, the interface will not beep. |

8.7 App Settings

In the App settings, you can view and edit the coloured zones representing the boom's lifting capacities shown on the Operation and Job Planner screens.

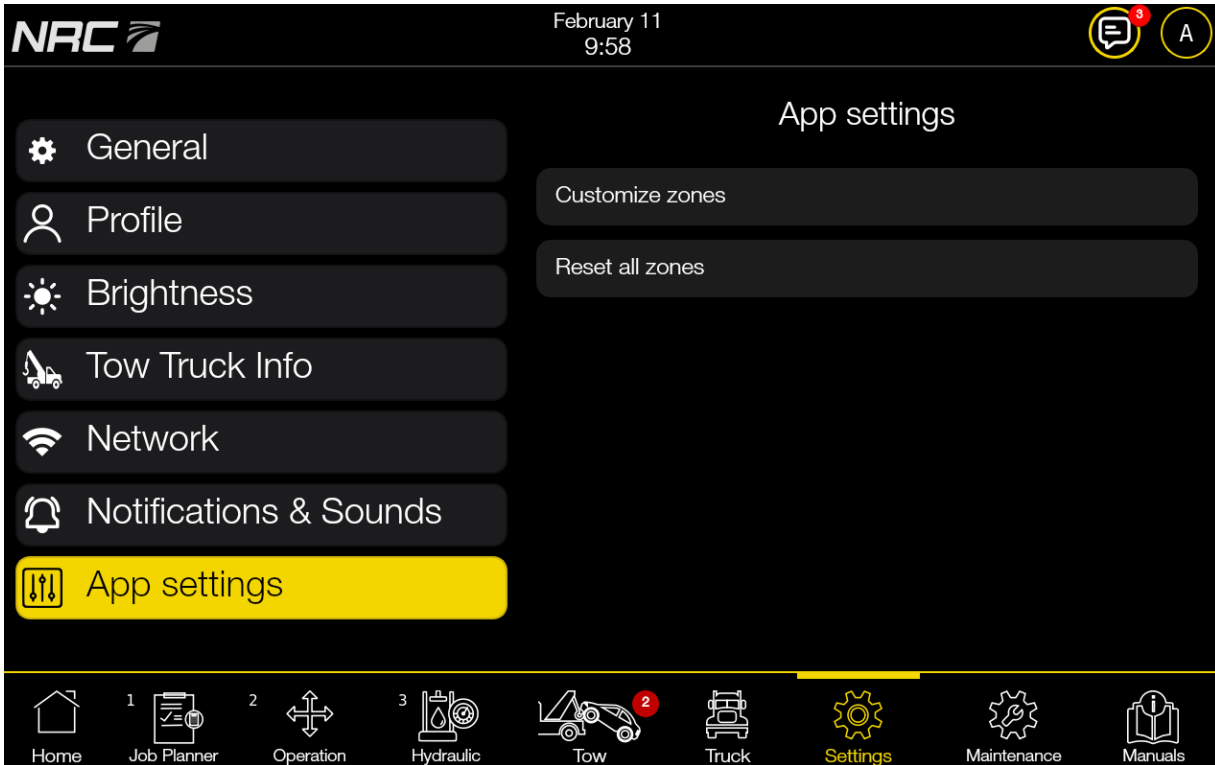


FIGURE 37 – APP SETTINGS SCREEN

Tap **Customize zones** to select the number of zones and their increment value. Figure 38 shows an example with nine zones at 20,000 lb increments. The legend updates in real time as you configure your settings.

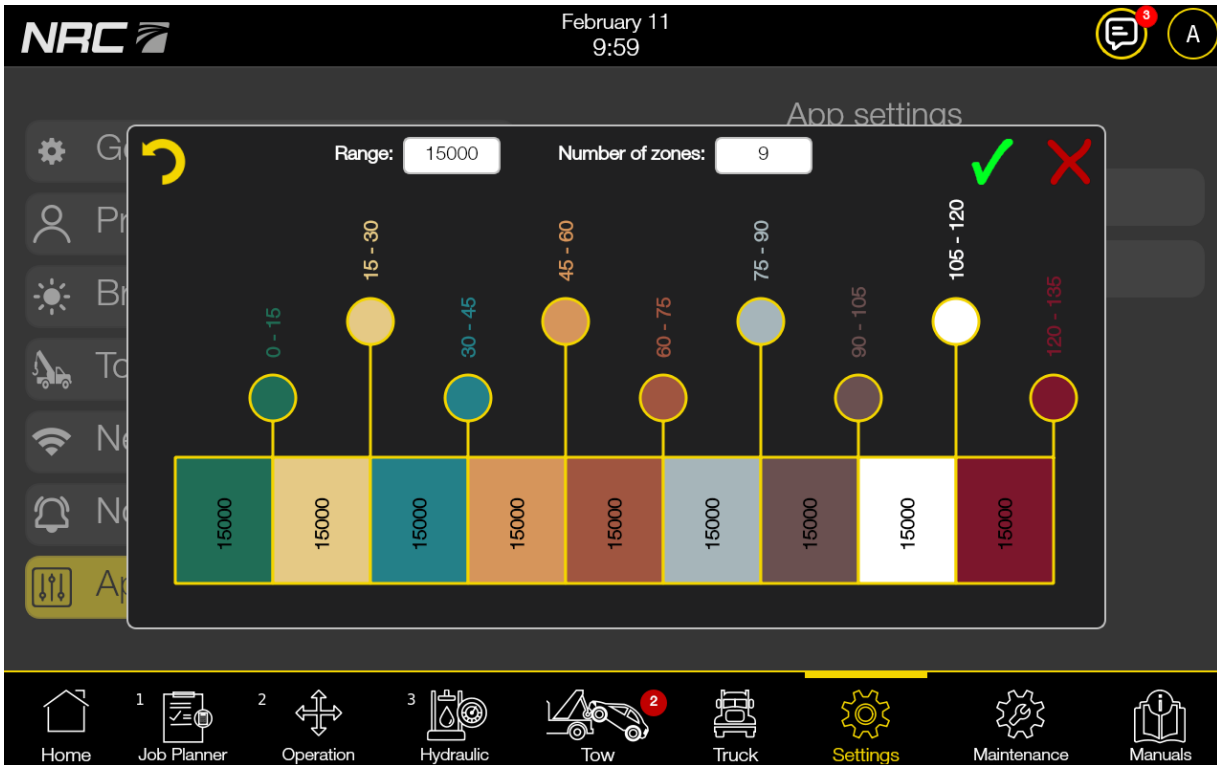


FIGURE 38 – APP SETTINGS – CUSTOMIZING ZONES

Tap **Reset all zones** to undo your changes and revert to the default number of zones and increment values.

9 MAINTENANCE SCREEN

The Maintenance screen of the touchscreen interface (Figure 39) allows you to track maintenance tasks.

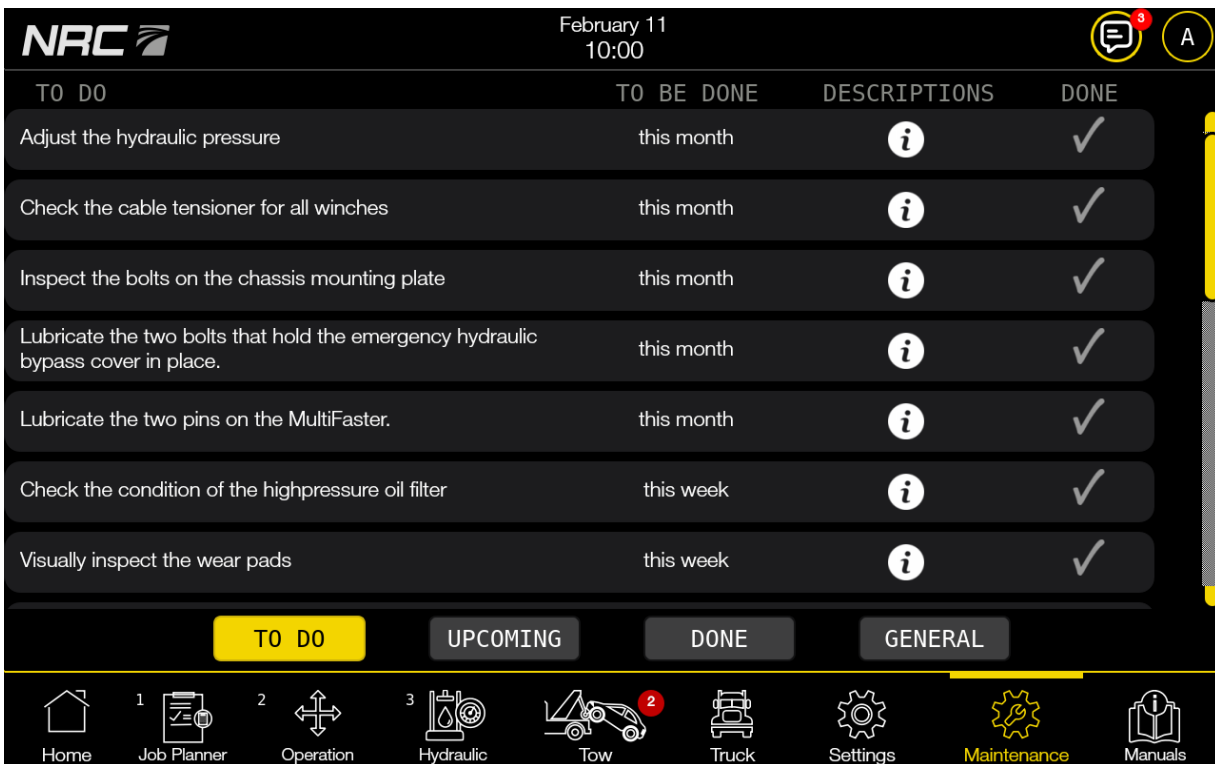


FIGURE 39 – MAINTENANCE SCREEN


NOTE: Use the scrollbar on the right to view all the tasks in the list.

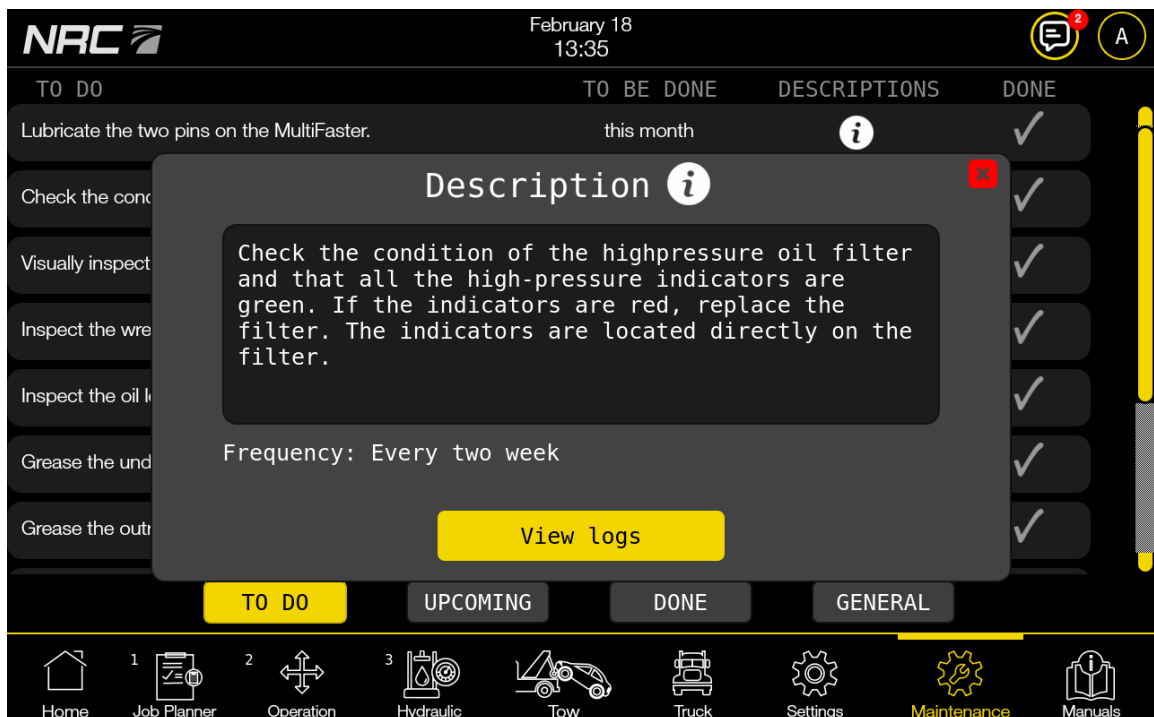
There are four lists:


- **To Do:** Tasks that need to be completed.
- **Upcoming:** Tasks that do not need to be completed yet, but will need to be completed in the near future.
- **Done:** Tasks that are completed and do not need to be redone yet.
- **General:** Tasks that have to be completed every time you use the truck.

9.1 To Do list


In the **To Do** list, you can view tasks that need to be completed. You can also do the following:

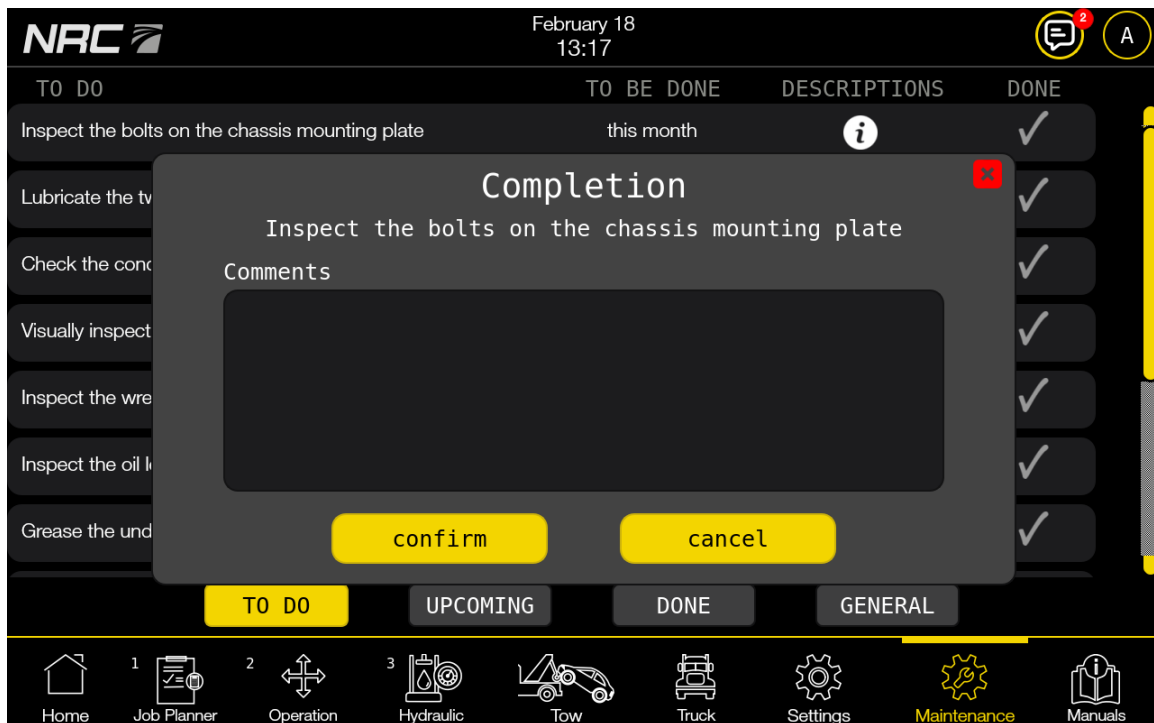
- View tasks to be completed in the **To Do** column.
- View the frequency at which a task should be completed in the **To Be Done** column. These frequencies are set according to NRC's maintenance manual.
- Tap  in the **Descriptions** column to view information about a task.



- In the **Descriptions** window, tap **View logs** to see when the task was completed in the past, the user who completed it and their comments. Tap  to exit.






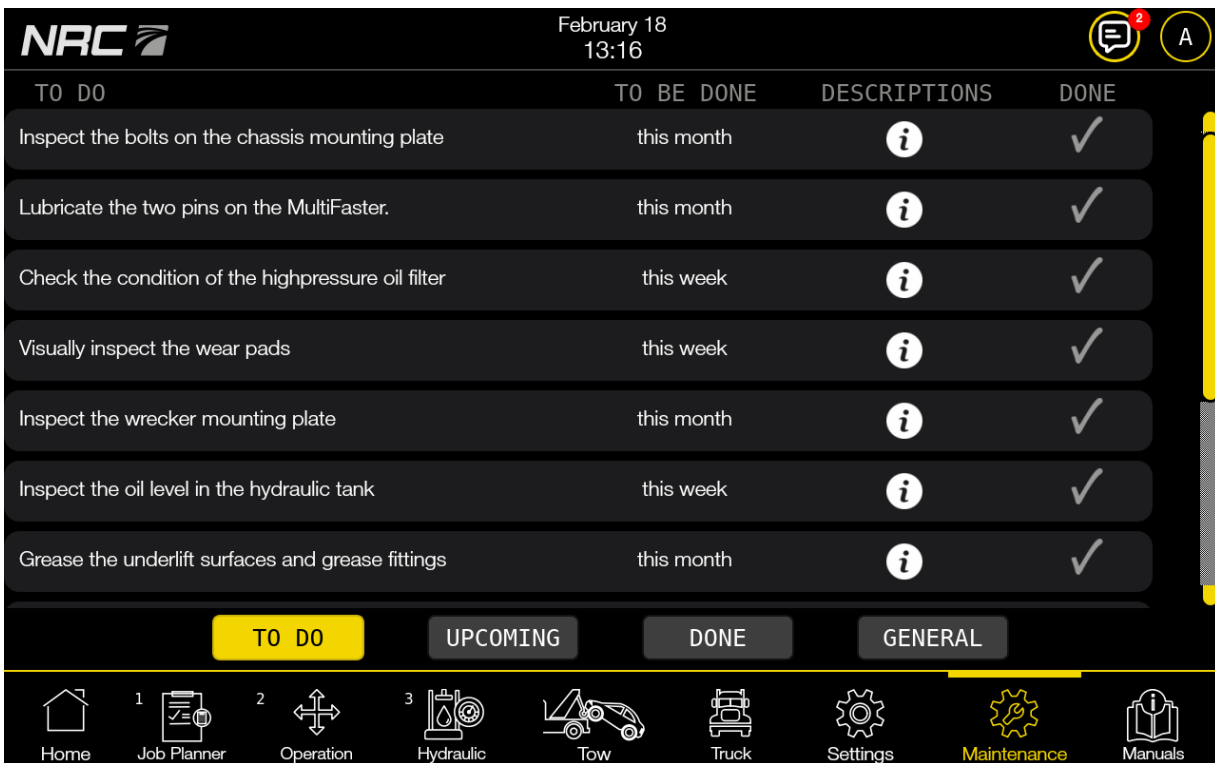
- Tap  in the **Done** column to mark a task as done. In the window that appears, add comments if needed and tap **Confirm** to move the task to the **Done** list.



9.2 Upcoming list



In the **Upcoming** list, you can view tasks that do not need to be completed yet, but will need to be completed in the near future. You can also do the following:

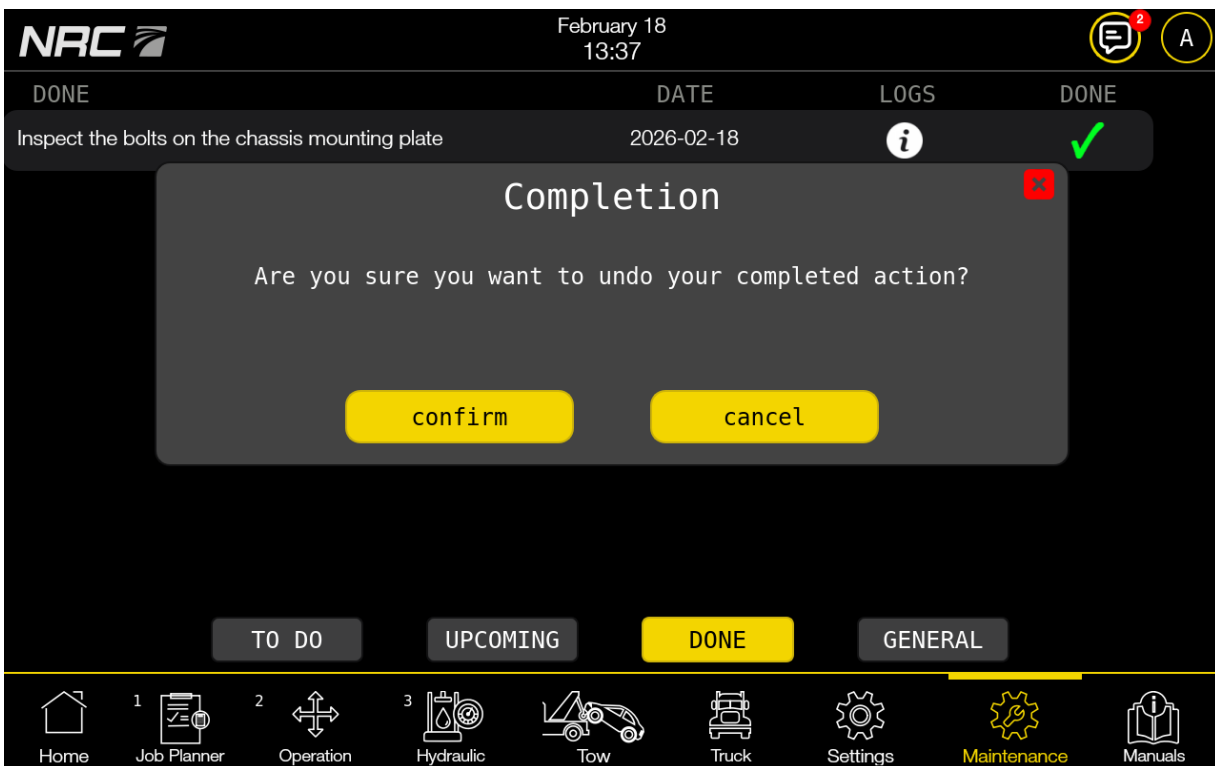
- View upcoming tasks in the **Upcoming** column.
- View the frequency at which a task should be completed in the **To Be Done** column. These frequencies are set according to NRC's maintenance manual.
- Tap  in the **Descriptions** column to view information about a task.
- In the **Descriptions** window, tap **View logs** to see when the task was completed in the past, the user who completed it and their comments. Tap  to exit.
- Tap  in the **Done** column to mark a task as done. In the window that appears, add comments if needed and tap **Confirm** to move the task to the **Done** list.



9.3 Done list




In the **Done** list, you can view tasks that are completed and do not need to be redone yet. You can also do the following:

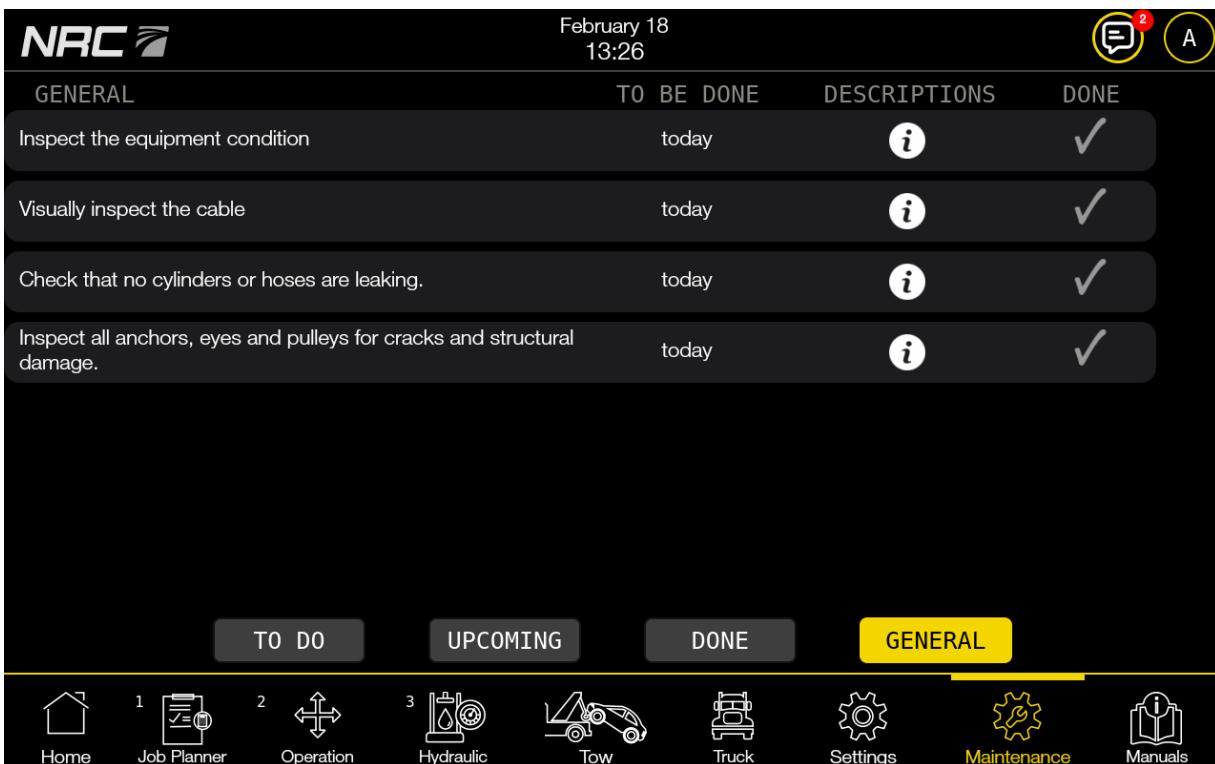
- View completed tasks in the **Task Done** column.
- View the date a task was last completed in the **Date** column.
- Tap  in the **Logs** column to view the log of when a task was previously completed.
- Tap  in the **Done** column to mark a task as not done. In the window that appears, tap **Confirm** to move the task to the **To Do** list. Any existing comments on the task will be preserved.



9.4 General list

In the **General** list, you can view tasks that have to be completed every time you use the truck. You can also do the following:

- View tasks to be completed in the **General** column.
- View the frequency at which a task should be completed in the **To Be Done** column.
- Tap  in the **Descriptions** column to view information about a task.
- In the **Descriptions** window, tap **View logs** to see when the task was completed in the past, the user who completed it and their comments. Tap  to exit.
- Tap  in the **Done** column to mark a task as done. In the window that appears, add comments if needed and tap **Confirm** to move the task to the **Done** list.



10 MANUALS SCREEN

The Manuals screen of the touchscreen interface (Figure 40) allows you to view the relevant equipment manuals.

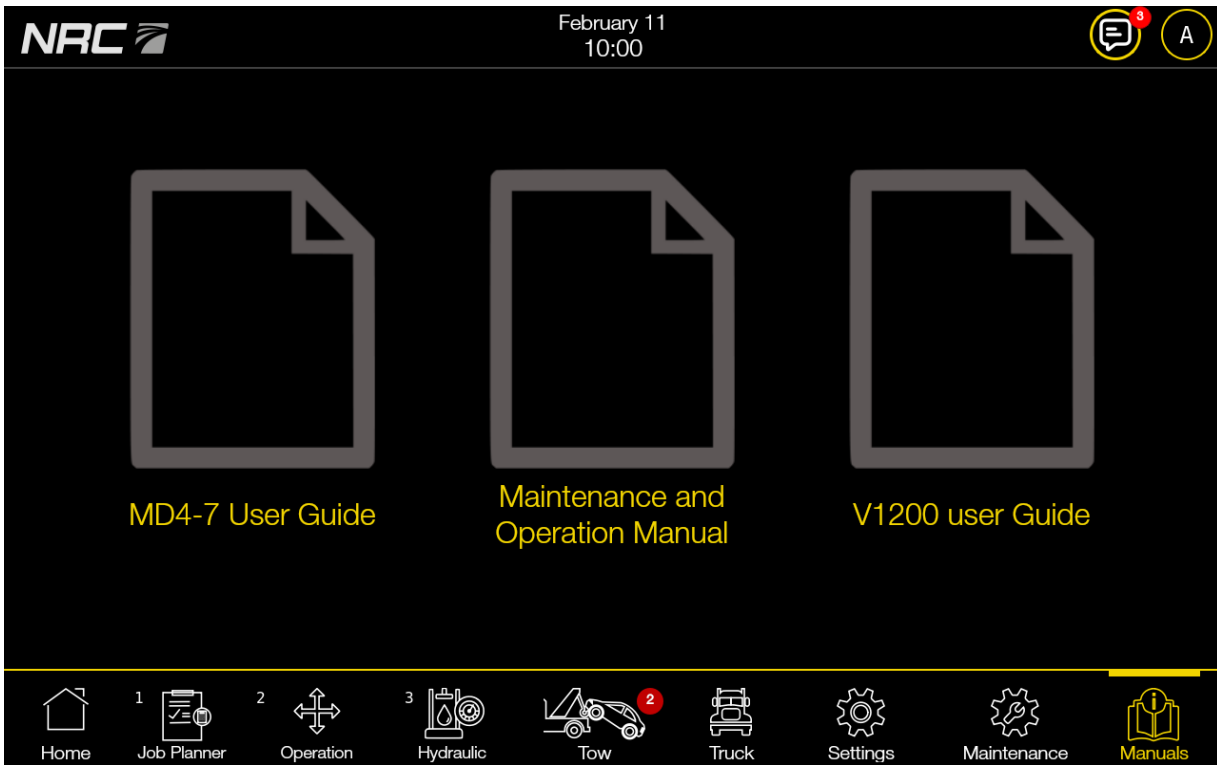


FIGURE 40 – MANUALS SCREEN

To view a manual, tap the relevant title.

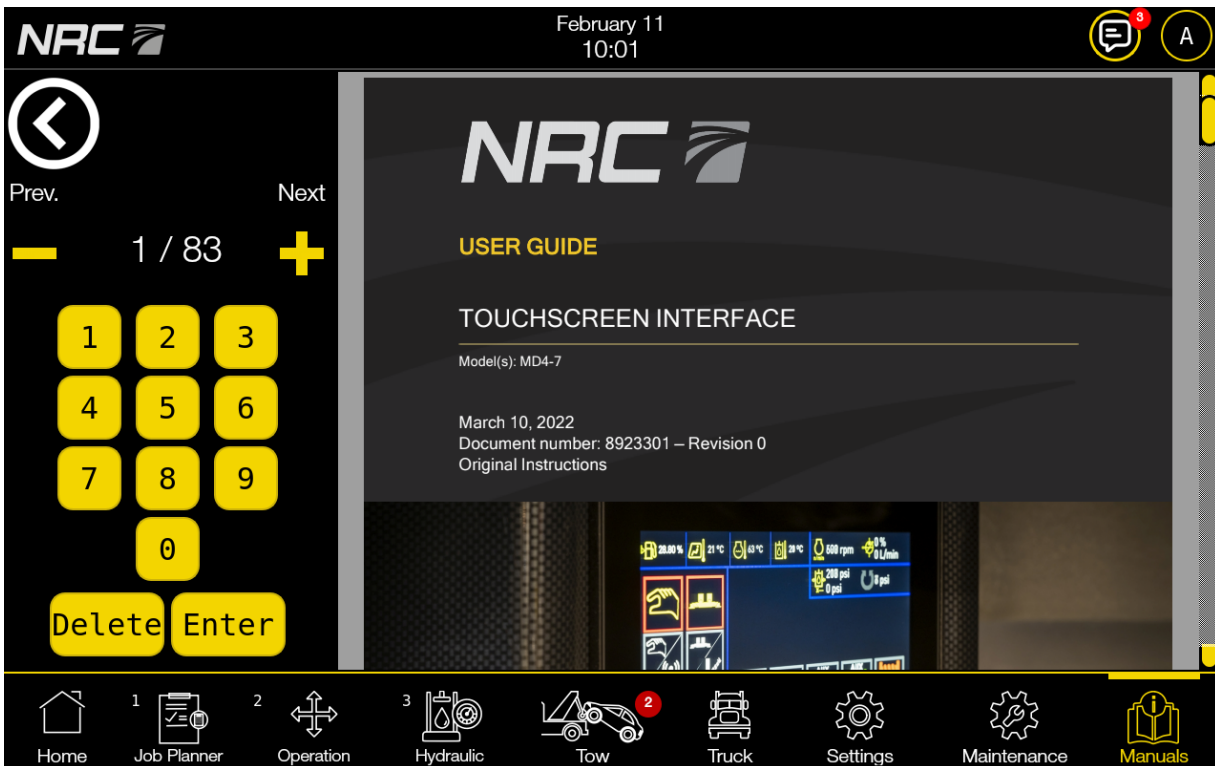





FIGURE 41 – VIEW MANUAL SCREEN

To navigate the manual:

- Swipe left for the next page or swipe right for the previous page with one finger.
- Zoom in or out with two fingers.
- Press **Next**  or **Prev.**  to scroll through the pages.
- Use the number pad to enter a page number and tap **Enter**. Tap **Delete** to clear your entry if needed.

To return to the screen in Figure 40, tap  in the upper left corner.



NRC-INDUSTRIES.COM

2430 Principale, St-Paul-d'Abbotsford, QC, J0E 1A0

T.450 379.5796 F.450 379.5796