

# 50CS

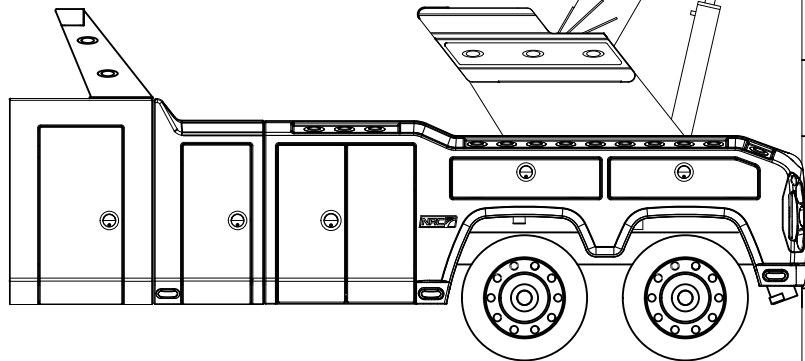
**XX.X** - BASED ON STRUCTURAL STRENGTH  
 - BASÉ SUR LA LIMITE STRUCTURELLE

**XX.X** - BASED ON STABILITY ( 80% OF TIPPING )  
 - BASÉ SUR 80% DE LA LIMITE DE STABILITÉ

APPLIES WHEN / APPLICABLE QUAND :

- WORKING ON SOLID GROUND LEVEL / LA SURFACE EST COMPACTE ET SOLIDE
- EQUIPMENT WEIGHT / LA MASSE EST DE : 45 000lb ( 20 411kg )
- WB / L'EMPATTEMENT EST DE : 296" ( 7.5 METRES )

SLIGHT CHANGES IN CAPACITY MAY OCCUR WITH DIFFERENT TRUCK MODELS AND OPTIONS / LA CAPACITÉ DE LEVAGE PEUT VARIER SELON LES OPTIONS ET LE MODÈLE DE CAMION.



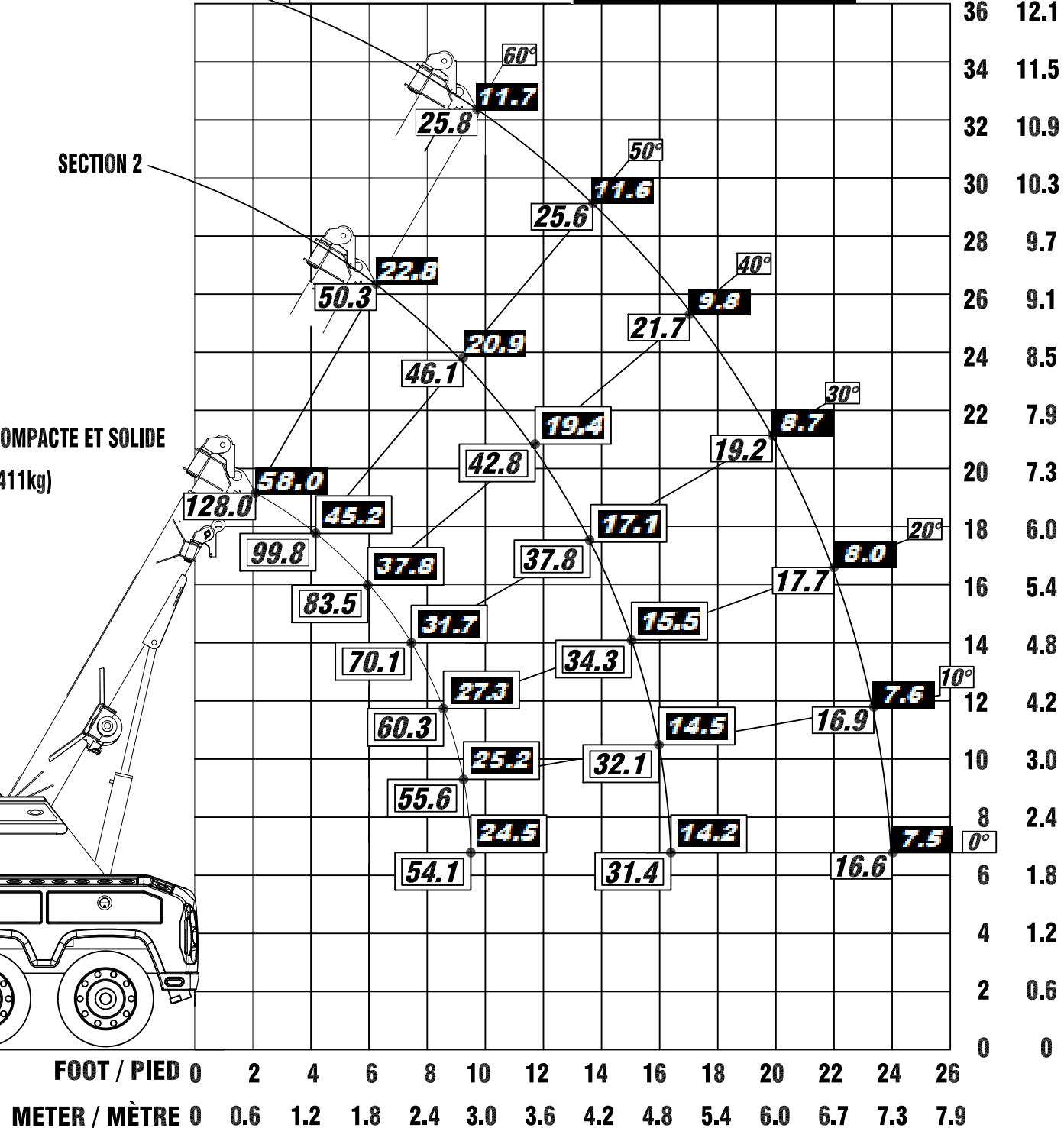
SECTION 3

SECTION 2

(x1000lb)

(x1000kg)

METER / MÈTRE  
FOOT / PIED



FOOT / PIED 0 2 4 6 8 10 12 14 16 18 20 22 24 26  
 METER / MÈTRE 0 0.6 1.2 1.8 2.4 3.0 3.6 4.2 4.8 5.4 6.0 6.7 7.3 7.9